

Fecha: (D.M.A) = 10-04-15

Interseccion = Calle 19 por Carrera 4

Hora de inicio = 2:00

Condicion climatica = Soleado

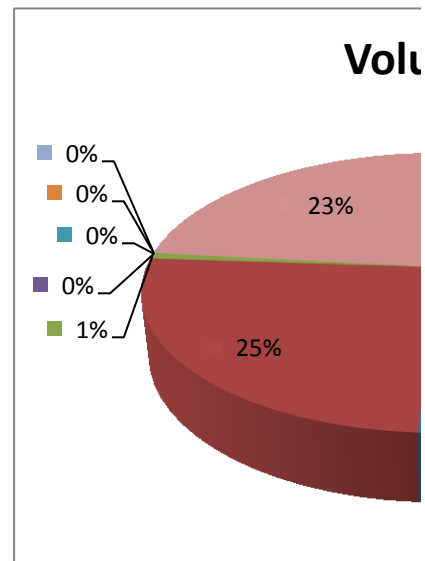
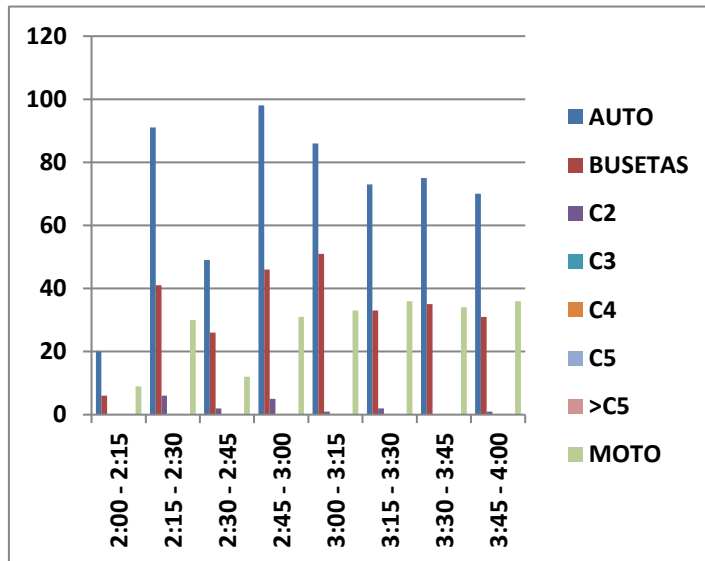
Aforador = Cynthia Vanessa Ramirez V.

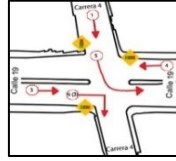
Movimientos aforados

Supervisor= Cynthia Vanessa Ramirez V.

3

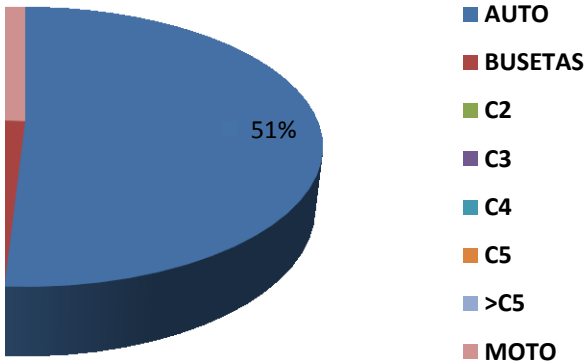
Hora de Inicio	CAMION					
	AUTO	BUSETAS	C2	C3	C4	C5
2:00 - 2:15	20	6	0	0	0	0
2:15 - 2:30	91	41	6	0	0	0
2:30 - 2:45	49	26	2	0	0	0
2:45 - 3:00	98	46	5	0	0	0
3:00 - 3:15	86	51	1	0	0	0
3:15 - 3:30	73	33	2	0	0	0
3:30 - 3:45	75	35	0	0	0	0
3:45 - 4:00	70	31	1	0	0	0
Volumen 2h	562	269	17	0	0	0
Composición	53%	25%	2%	0%	0%	0%
12:00 - 1:00	304	150	4	0	0	0
Composición	51%	25%	1%	0%	0%	0%
11:00 - 12:00	258	119	13	0	0	0
Composición	55%	25%	3%	0%	0%	0%



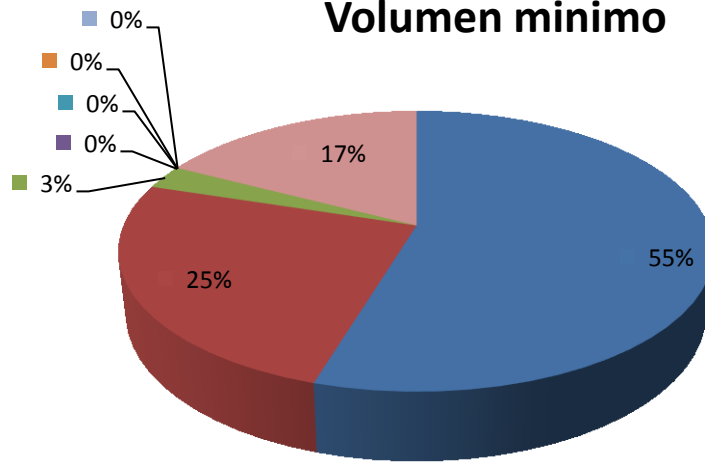


>C5	Total	MOTO	TOTAL	HORA	HORARIA
0	0	9	35		
0	6	30	168		
0	2	12	89		
0	5	31	180	472	44,2%
0	1	33	171	608	
0	2	36	144	584	
0	0	34	144	639	
0	1	36	138	597	55,8%
0	17	221	1069	1069	100,0%
0%	2%	21%	100%		
0	4	139	597	FHP:	Vol.max.
0%	1%	23%	100%	0,89	639
0	13	82	472	FHM:	Vol.min.
0%	3%	17%	100%	0,81	584

Volumen máximo



Volumen mínimo



- 
- AUTO
 - BUSETAS
 - C2
 - C3
 - C4
 - C5
 - >C5
 - MOTO