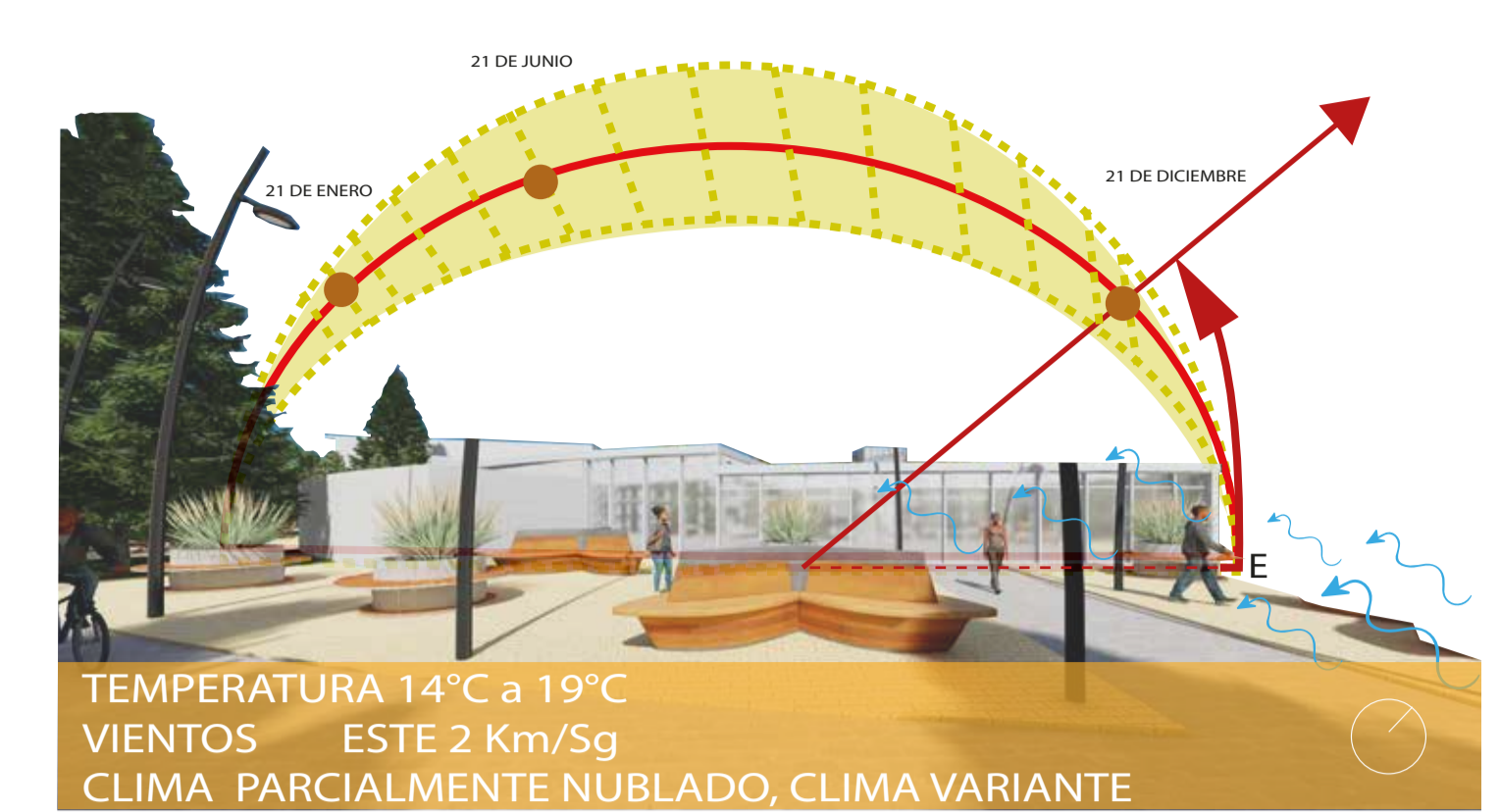
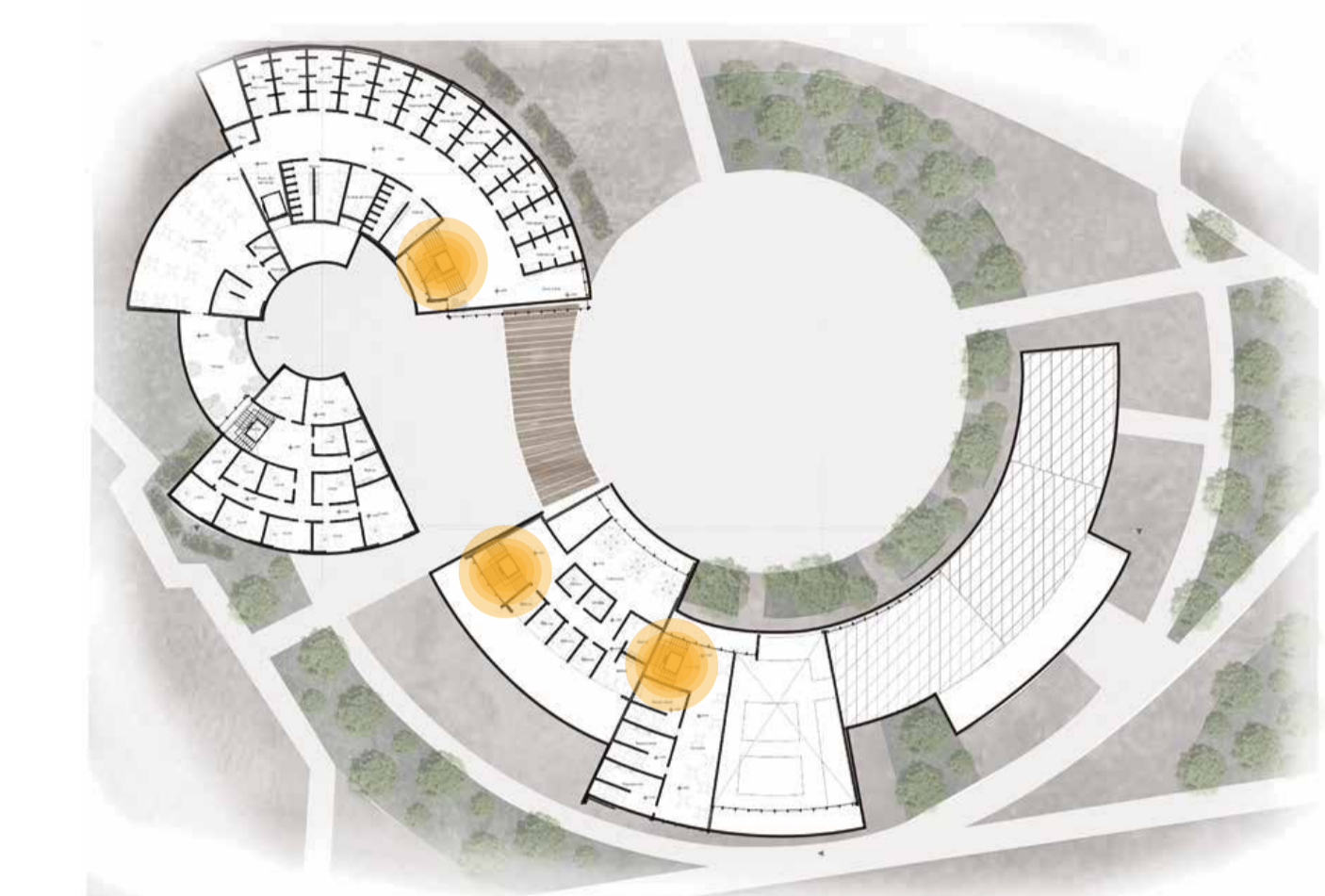


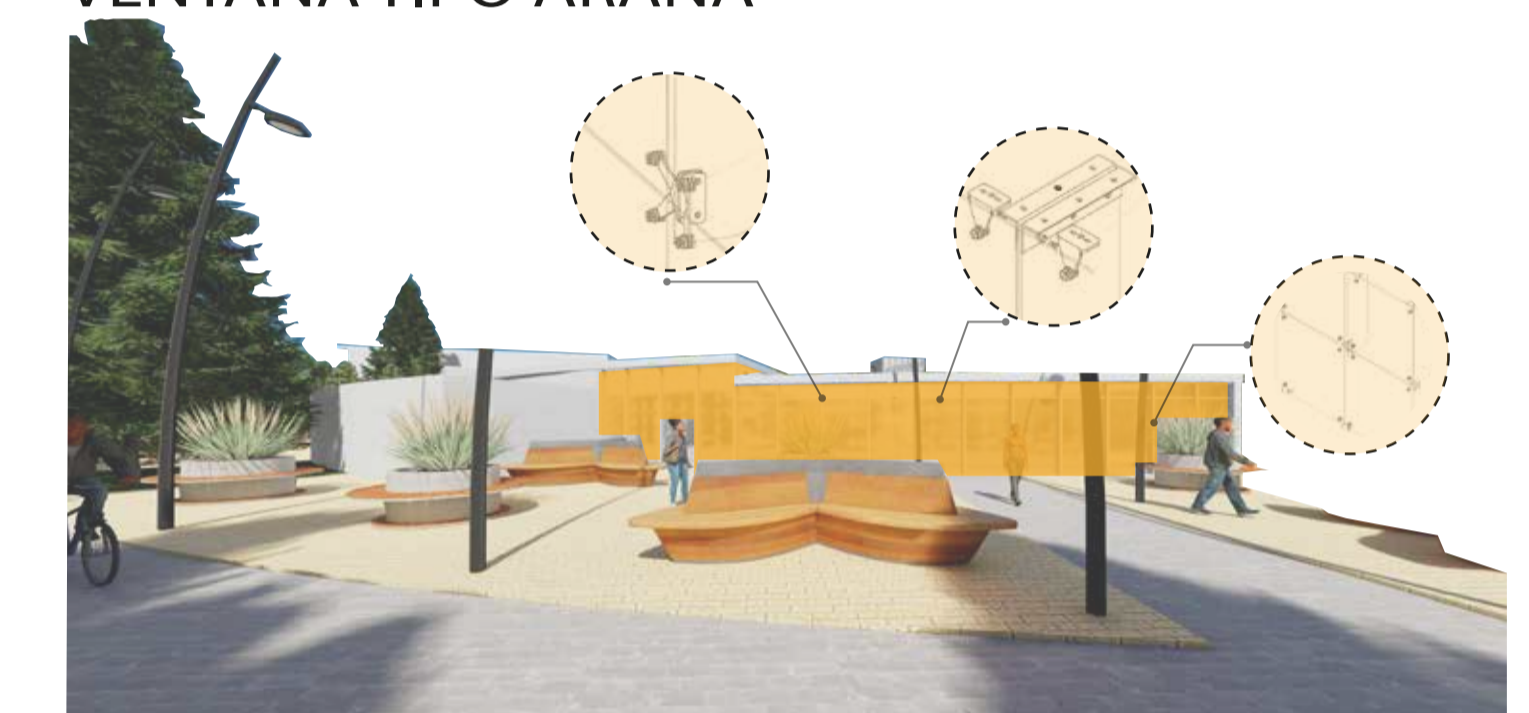
ESTRATEGIAS BIOCLIMÁTICAS



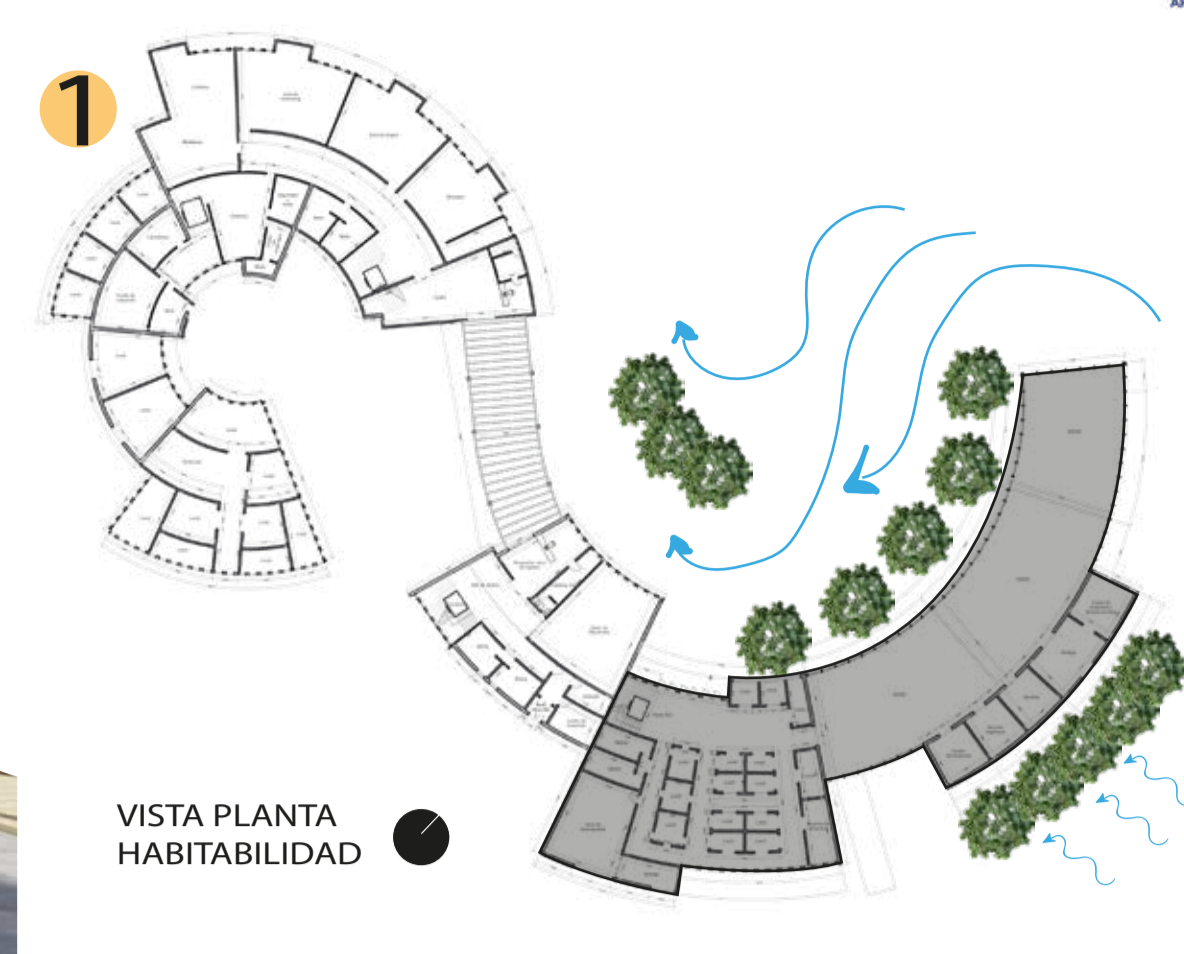
BAJANTE DE AGUA LLUVIA POR ESCALERA DIRECCIONADA A LOS TANQUES



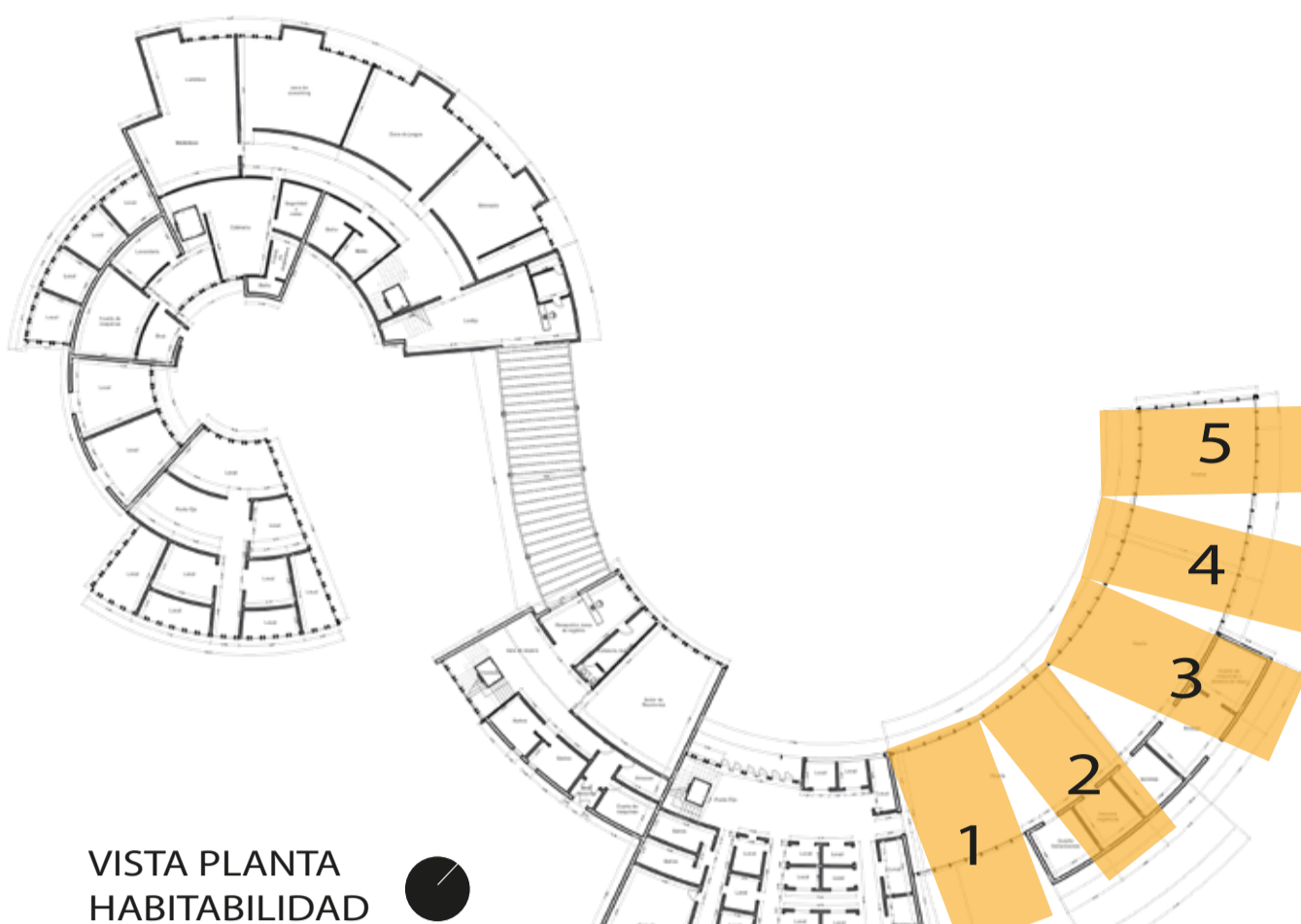
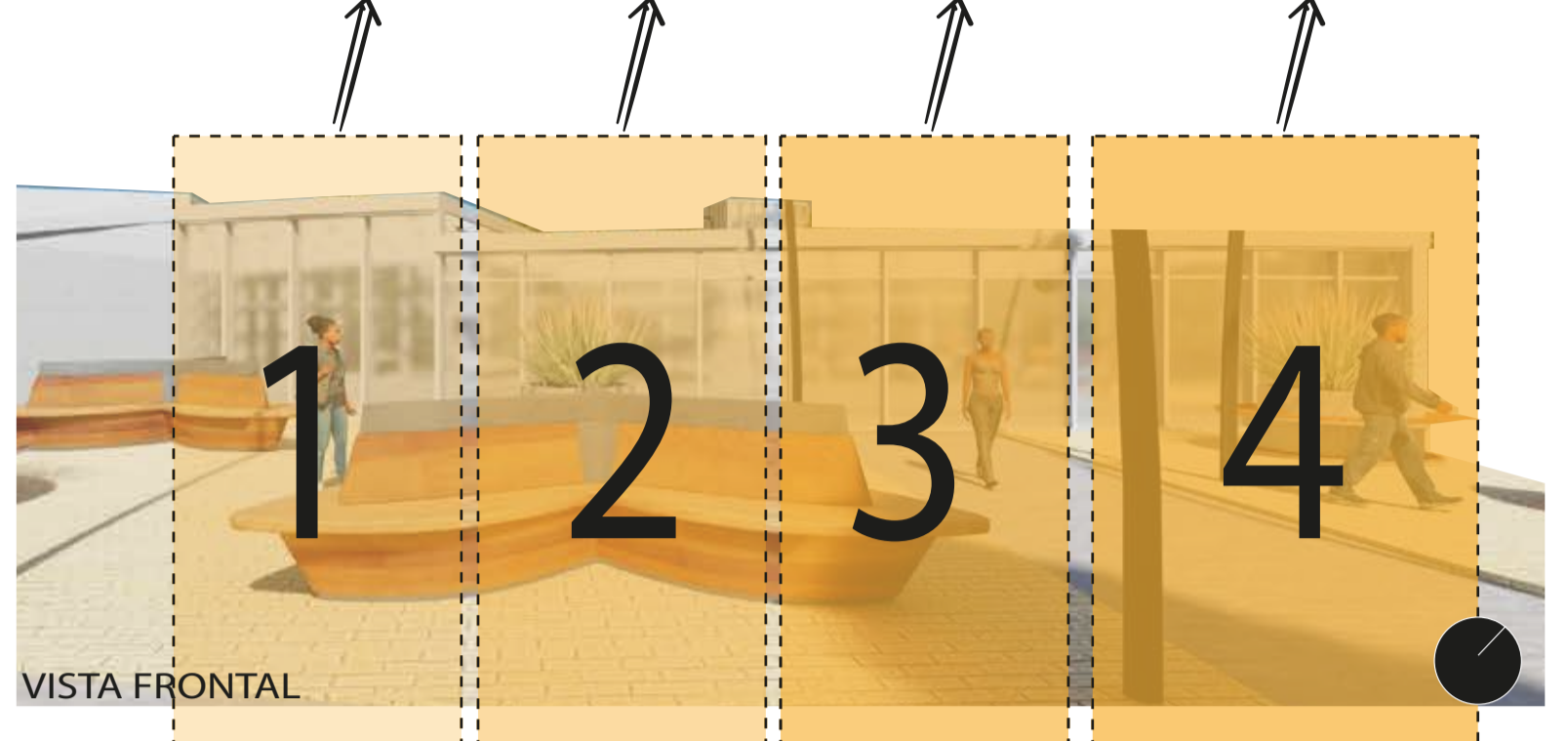
MATERIALIDAD



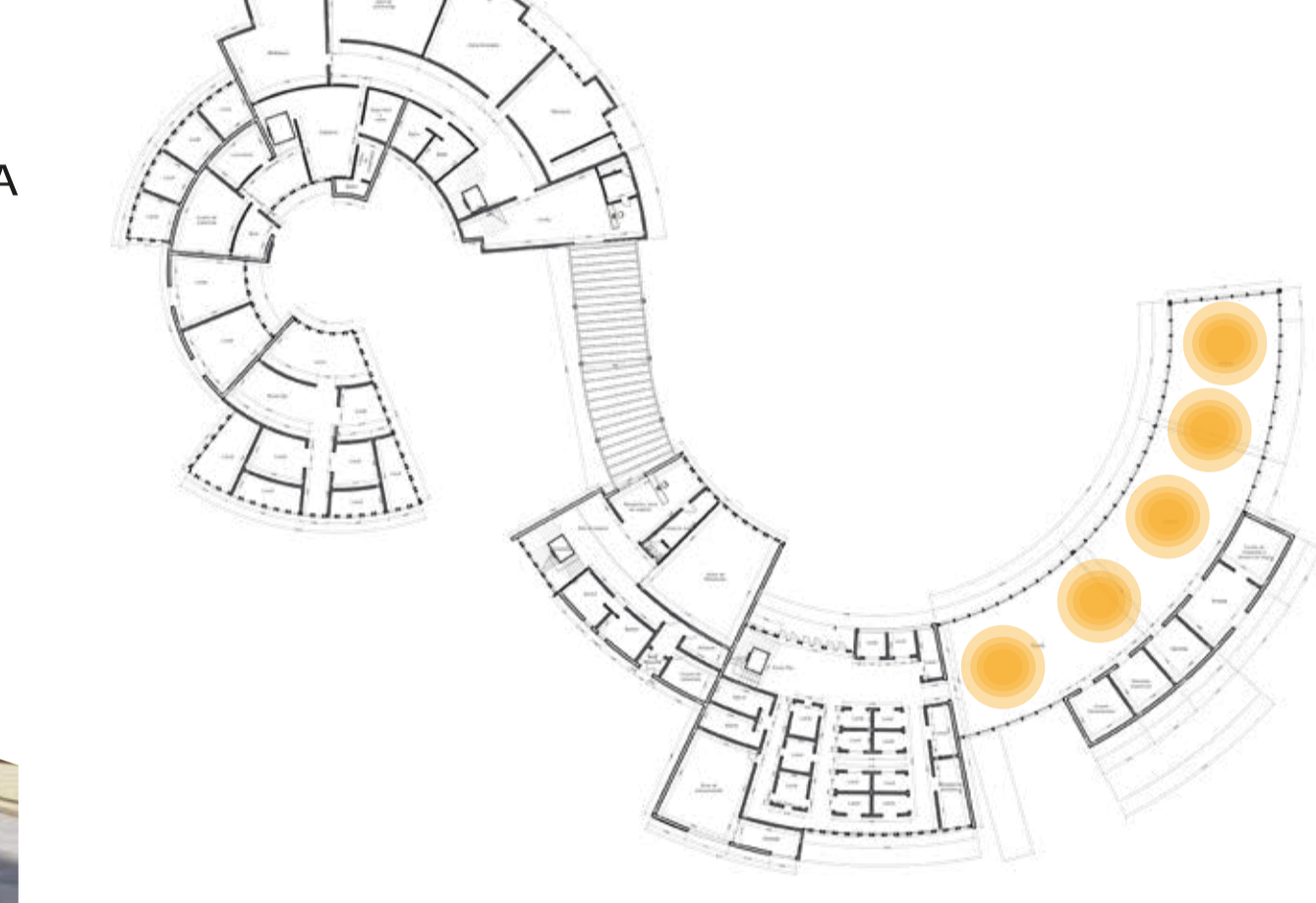
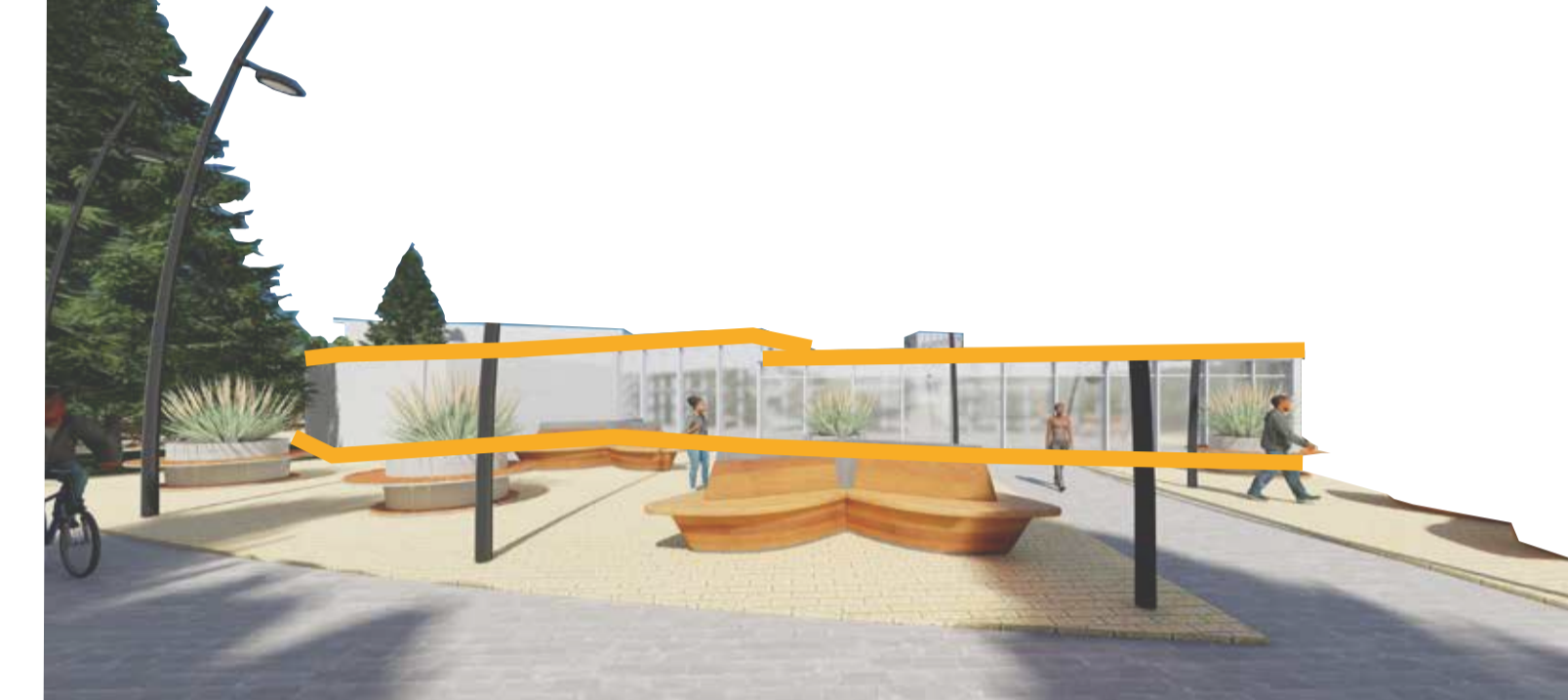
1 PRIMERA ESTRATEGIA ARBOLES EN EL CENTRO DE LA PLAZOLETA, PARA MITIGAR CIRCULACIÓN DEL VIENTO



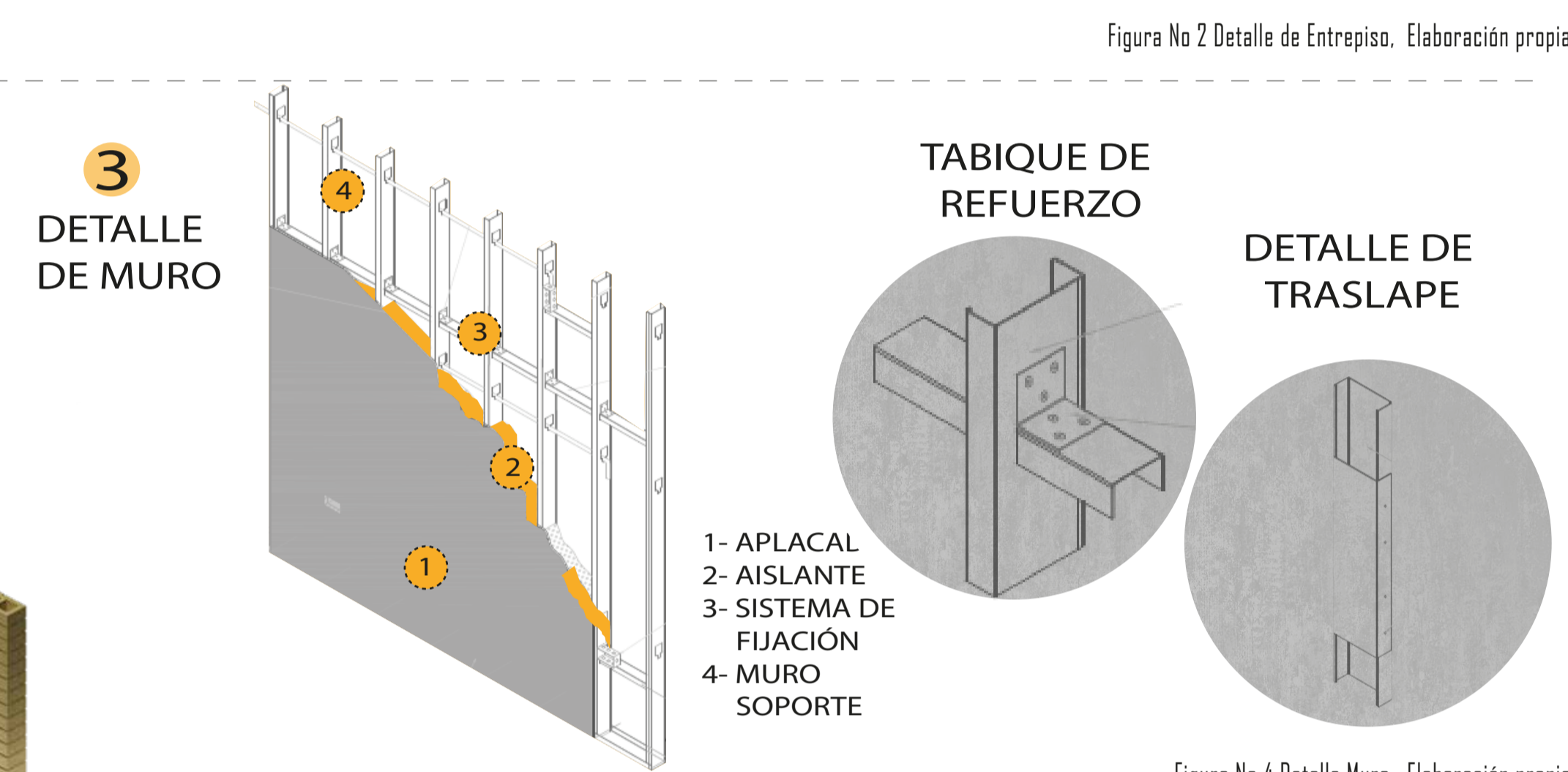
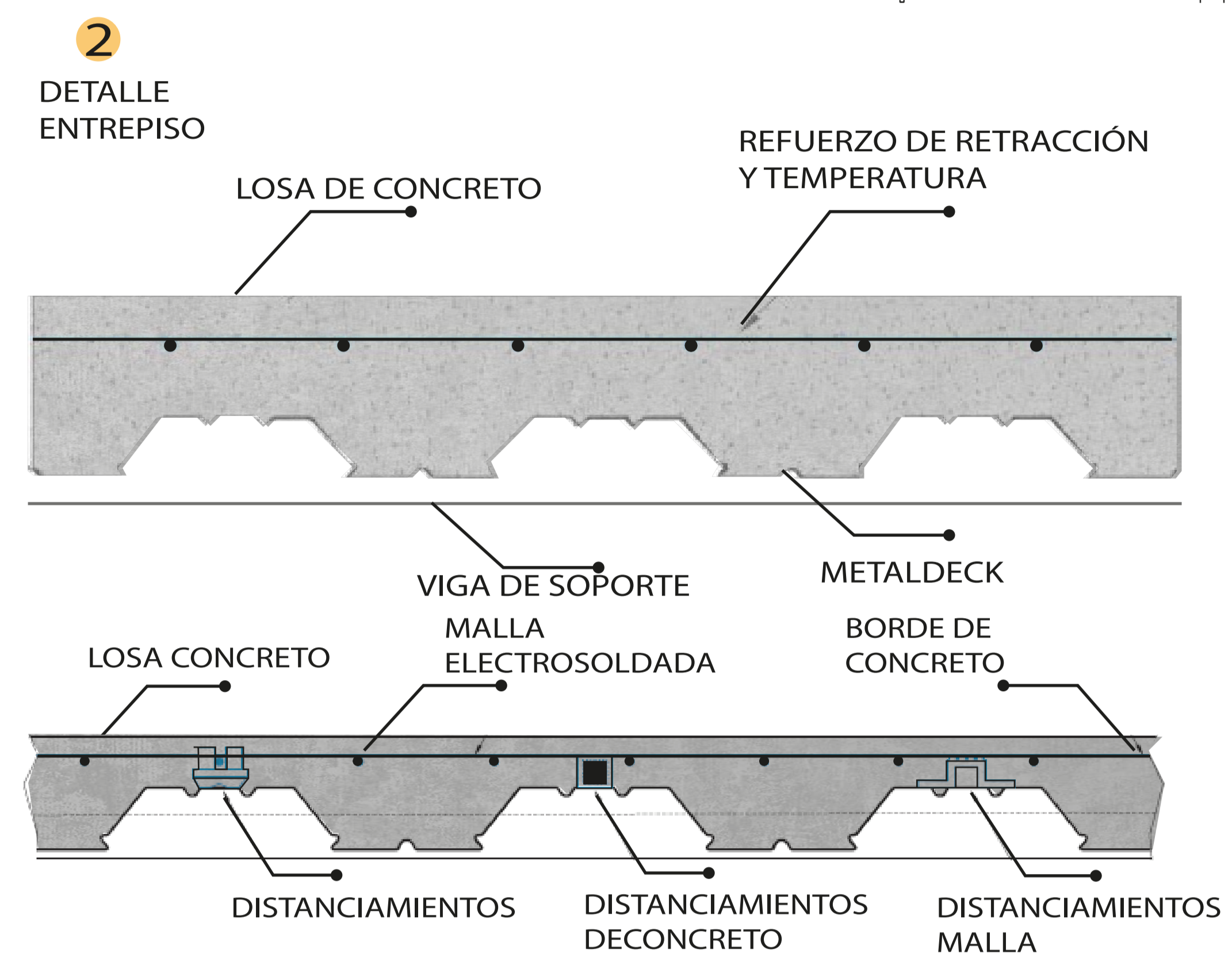
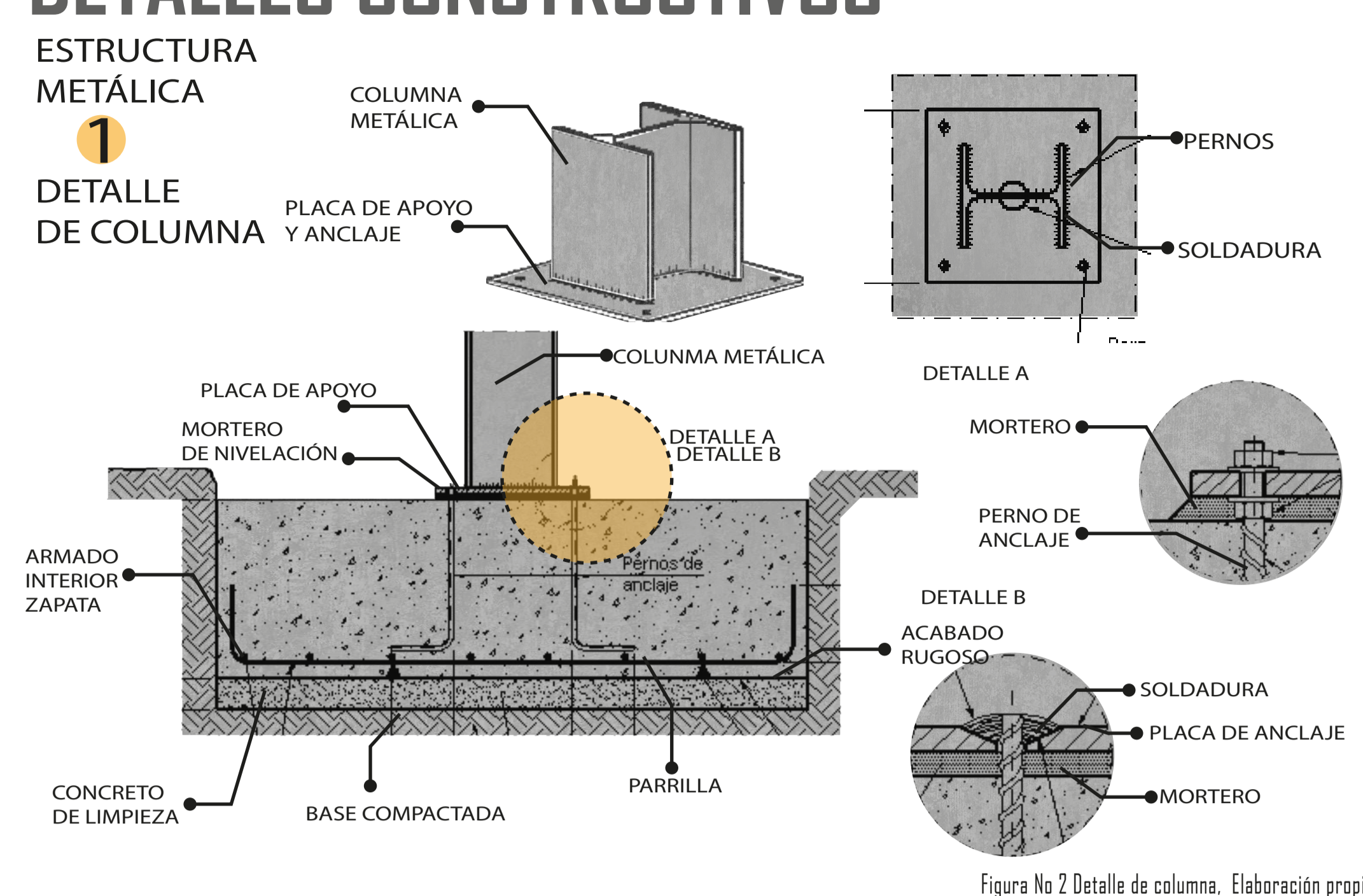
2 SEGUNDA ESTRATEGIA SE GENERA UNA DIVISIÓN DE TEMPERATURA PARA LA HUERTA, CON EL FIN DE PODER CULTIVAR DIFERENTES ESPECIES



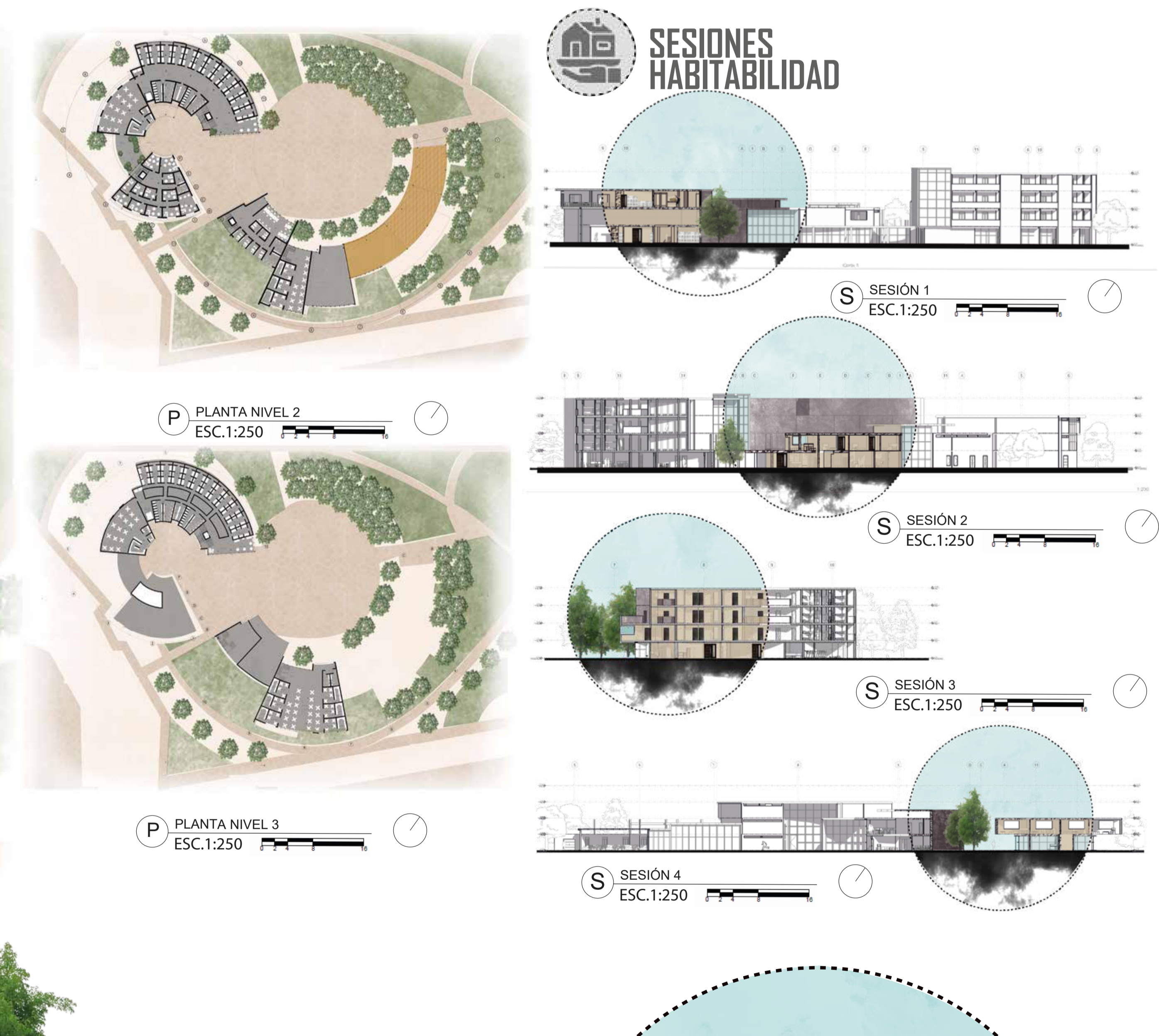
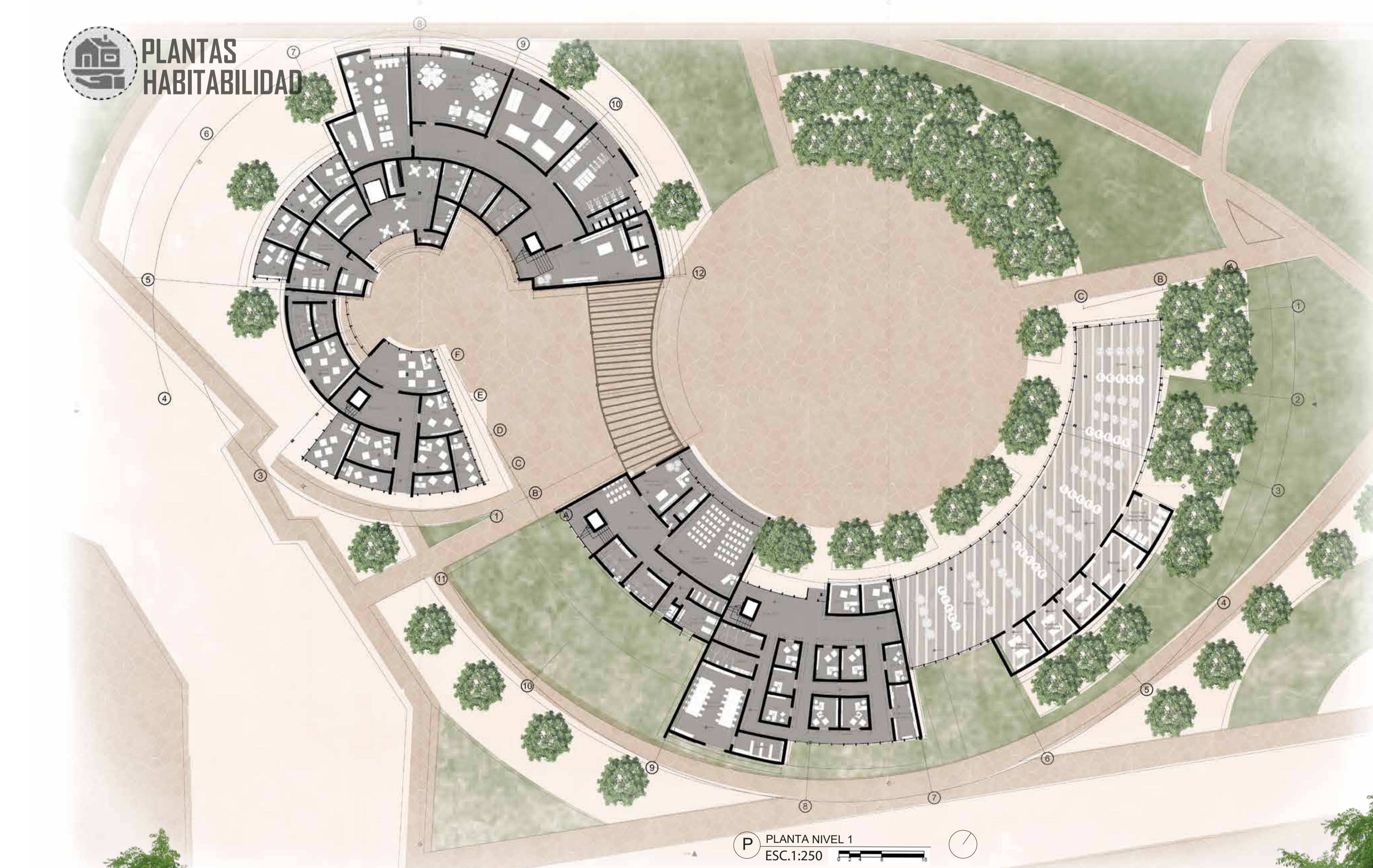
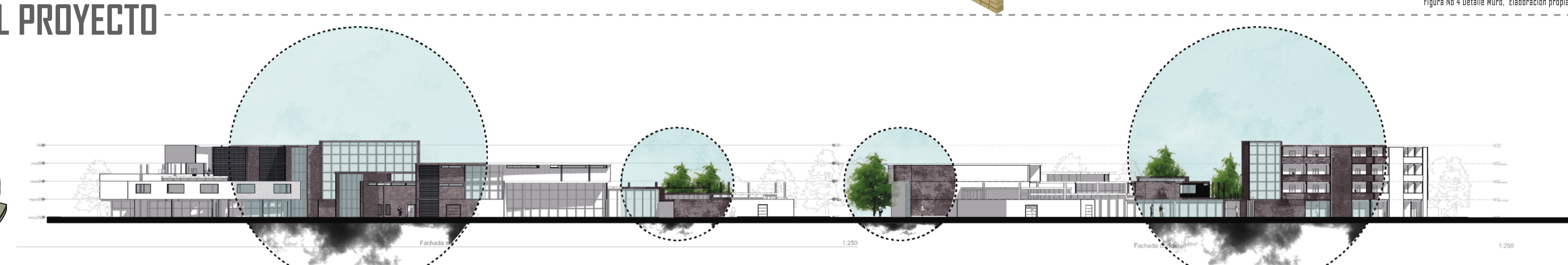
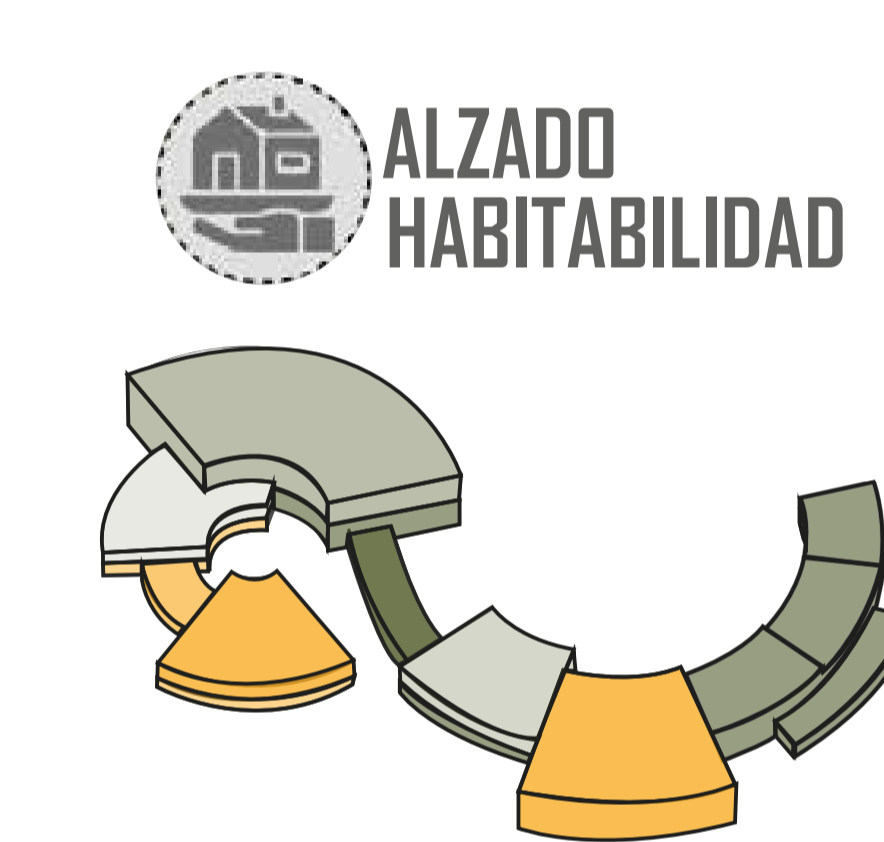
3 TERCERA ESTRATEGIA REALIZAR LA PLACA DE CONTRAPISO PARA LA HUERTA DE MANERA TÉRMICA Y VIDRIO CAMARA PARA LA CUBIERTA



DETALLES CONSTRUCTIVOS



PLANIMETRÍA DEL PROYECTO



VISTA AÉREA DEL VOLUMEN DE HABITABILIDAD