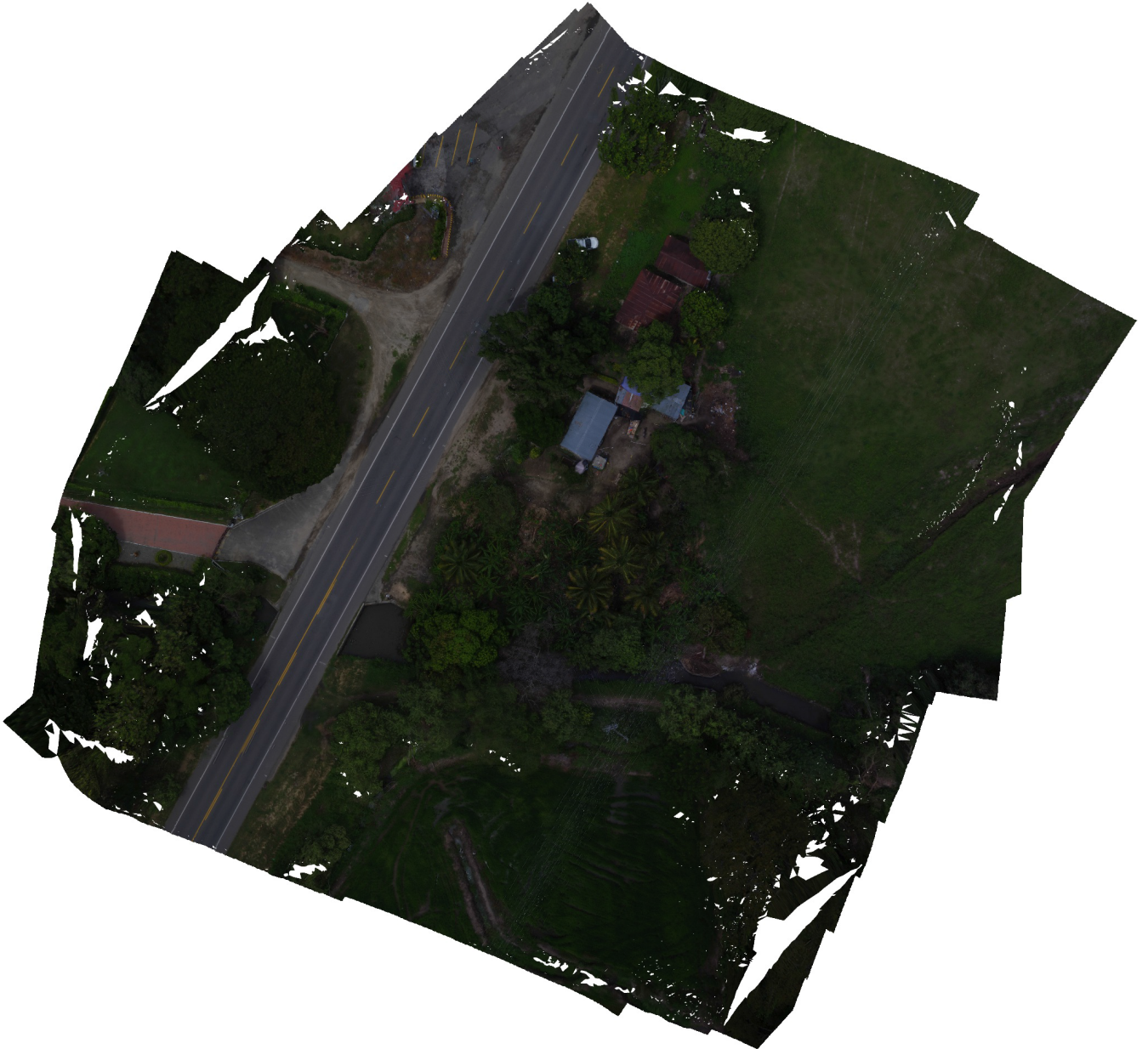


# Predio\_02

Processing Report  
31 October 2016



# Survey Data

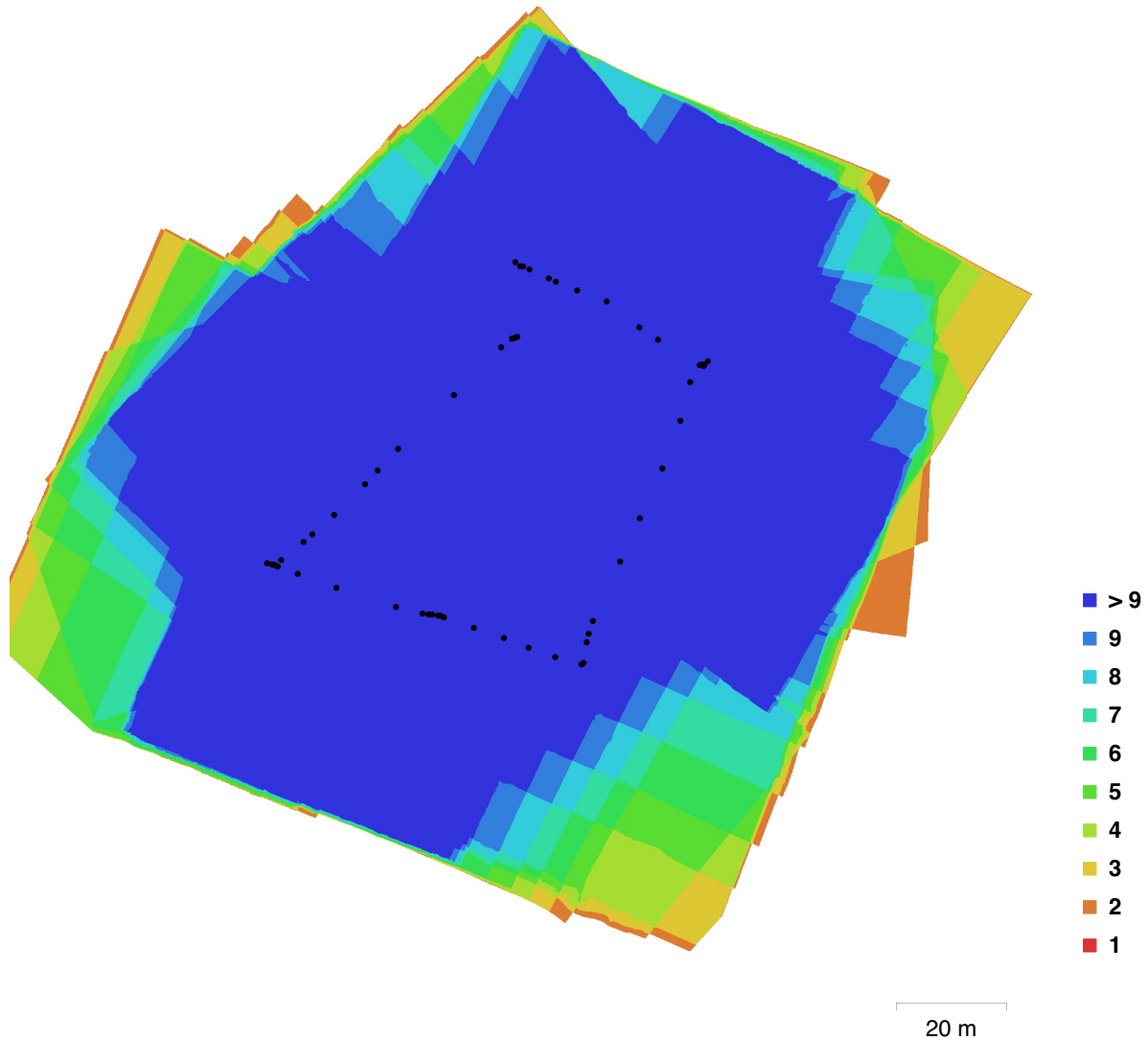


Fig. 1. Camera locations and image overlap.

Number of images:	57	Camera stations:	57
Flying altitude:	81.3 m	Tie points:	26,161
Ground resolution:	1.75 cm/pix	Projections:	135,958
Coverage area:	1.91e+04 sq m	Reprojection error:	1.92 pix

Camera Model	Resolution	Focal Length	Pixel Size	Precalibrated
FC550 (15 mm)	4608 x 3456	15 mm	3.76 x 3.76 um	No

Table 1. Cameras.

# Camera Calibration

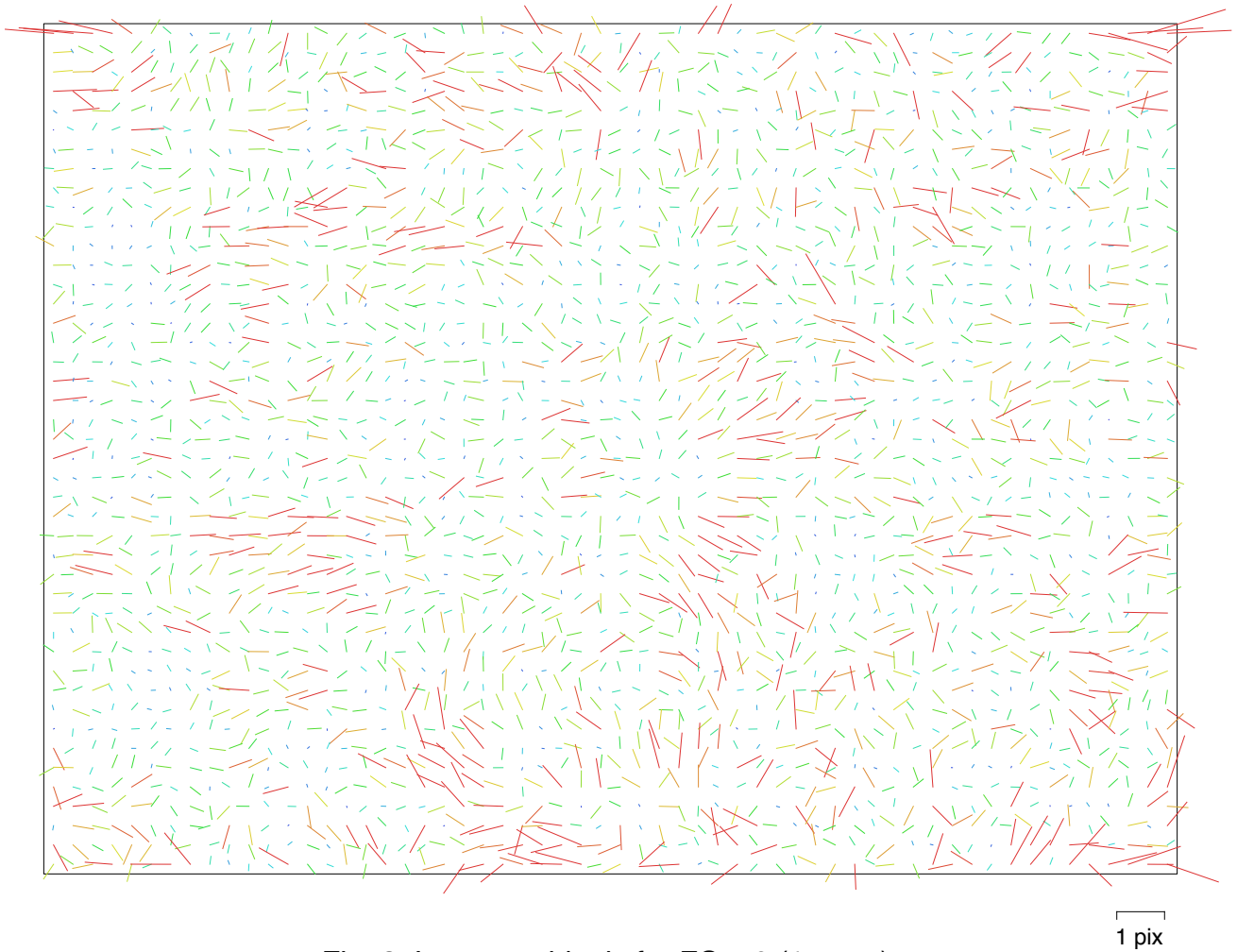


Fig. 2. Image residuals for FC550 (15 mm).

## FC550 (15 mm)

57 images

Resolution	Focal Length	Pixel Size	Precalibrated
<b>4608 x 3456</b>	<b>15 mm</b>	<b>3.76 x 3.76 um</b>	<b>No</b>
Type:	Frame	Skew:	0
Fx:	4274.67	Cx:	2352.45
Fy:	4274.67	Cy:	1671.55
K1:	-0.0140263	P1:	0.00173384
K2:	0.00585732	P2:	0.0023749
K3:	-0.00557739	P3:	0
K4:	0	P4:	0

# Camera Locations

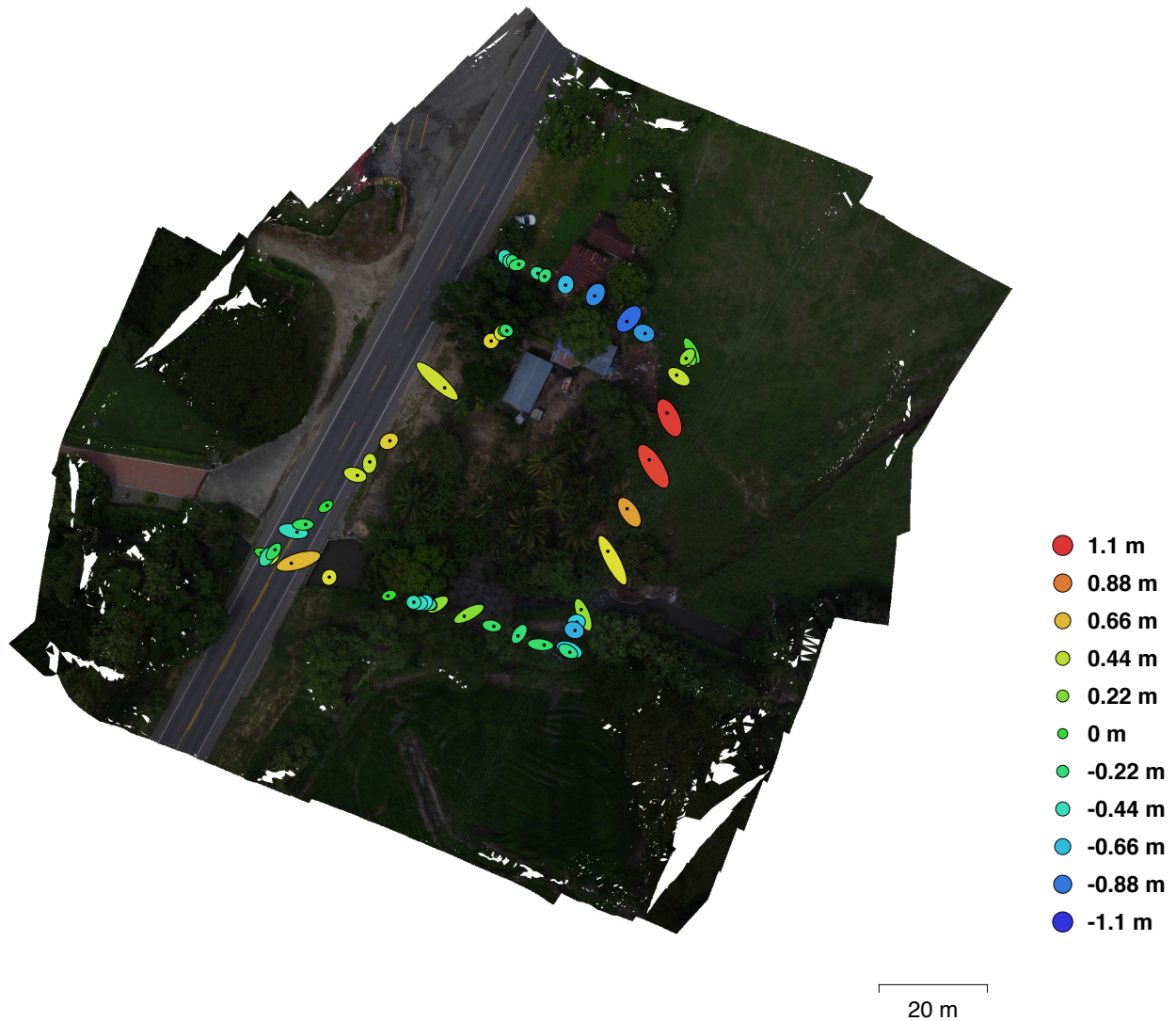


Fig. 3. Camera locations and error estimates.

Z error is represented by ellipse color. X,Y errors are represented by ellipse shape.

Estimated camera locations are marked with a black dot.

X error (m)	Y error (m)	XY error (m)	Z error (m)	Total error (m)
0.817349	0.851974	0.18064	0.464255	0.26864

Table 2. Average camera location error.

# Digital Elevation Model

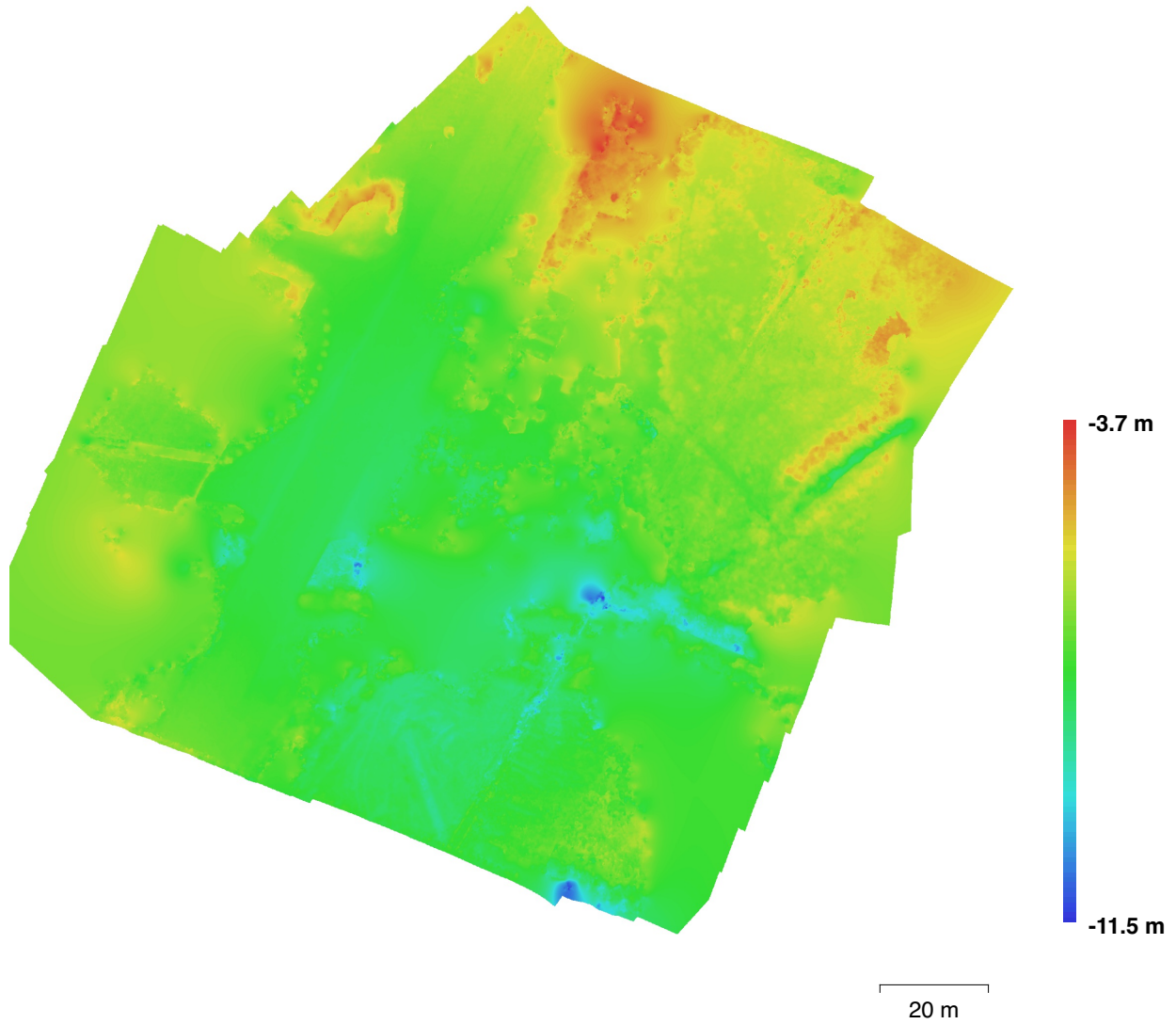


Fig. 4. Reconstructed digital elevation model.

Resolution: 7 cm/pix  
Point density: 204.26 points per sq m

# Processing Parameters

## General

Cameras	57
Aligned cameras	57
Coordinate system	WGS 84 (EPSG::4326)

## Point Cloud

Points	26,161 of 36,974
RMS reprojection error	0.253819 (1.92494 pix)
Max reprojection error	0.7779 (54.0454 pix)
Mean key point size	6.98685 pix
Effective overlap	6.45289

### Alignment parameters

Accuracy	Medium
Pair preselection	Reference
Key point limit	40,000
Tie point limit	4,000
Constrain features by mask	No
Matching time	5 minutes 2 seconds
Alignment time	41 seconds

## Dense Point Cloud

Points	4,814,792
--------	-----------

### Reconstruction parameters

Quality	Medium
Depth filtering	Aggressive
Processing time	1 minutes 38 seconds

## Model

Faces	948,388
Vertices	475,498
Texture	4,096 x 4,096, uint8

### Reconstruction parameters

Surface type	Height field
Source data	Dense
Interpolation	Enabled
Quality	Medium
Depth filtering	Aggressive
Face count	962,958
Processing time	11 seconds

### Texturing parameters

Mapping mode	Orthophoto
Blending mode	Mosaic
Texture size	4,096 x 4,096
UV mapping time	2 seconds
Blending time	3 minutes 12 seconds

## DEM

Size	3,372 x 3,384
Coordinate system	WGS 84 (EPSG::4326)

### Reconstruction parameters

Source data	Dense cloud
Interpolation	Enabled