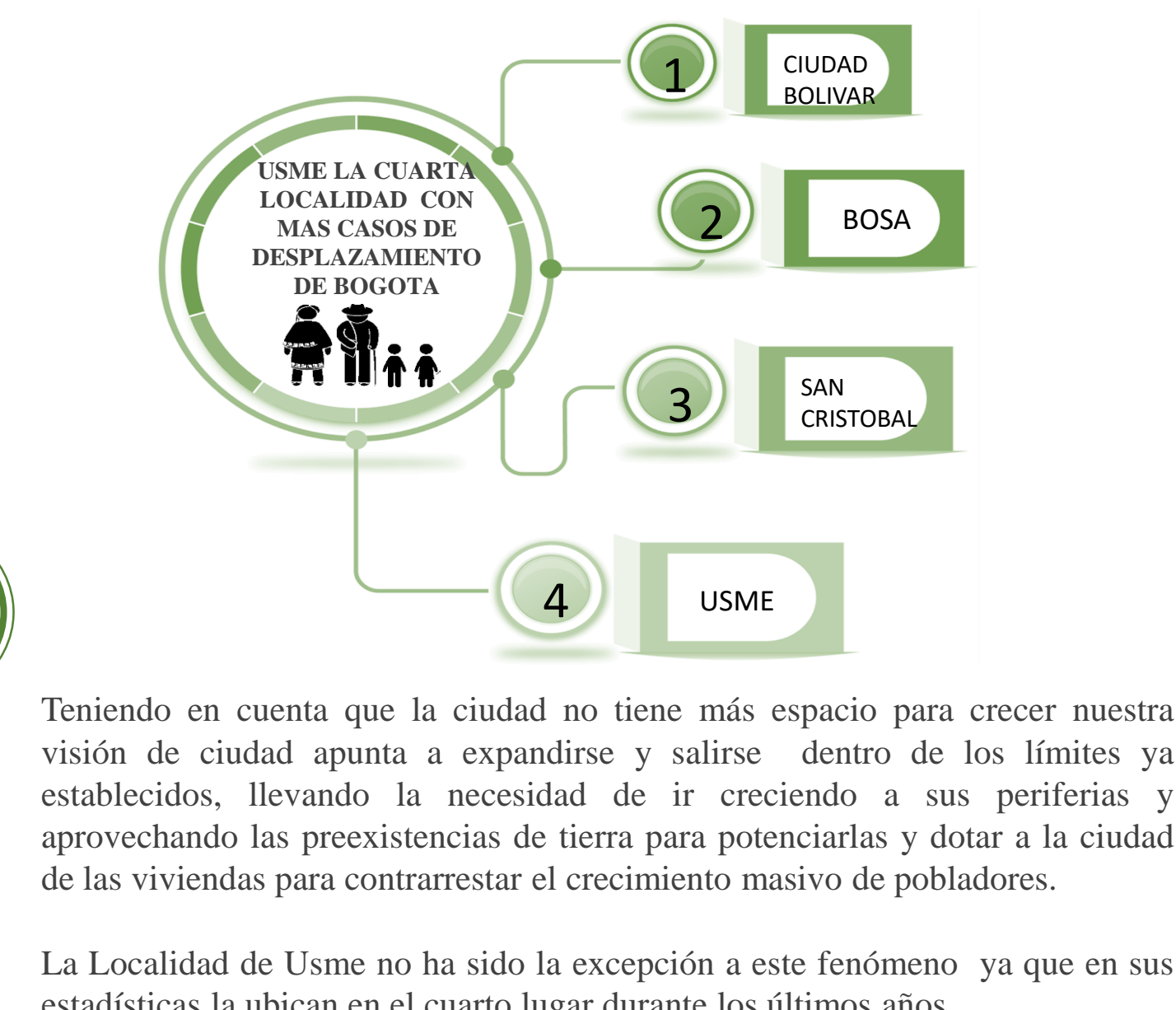
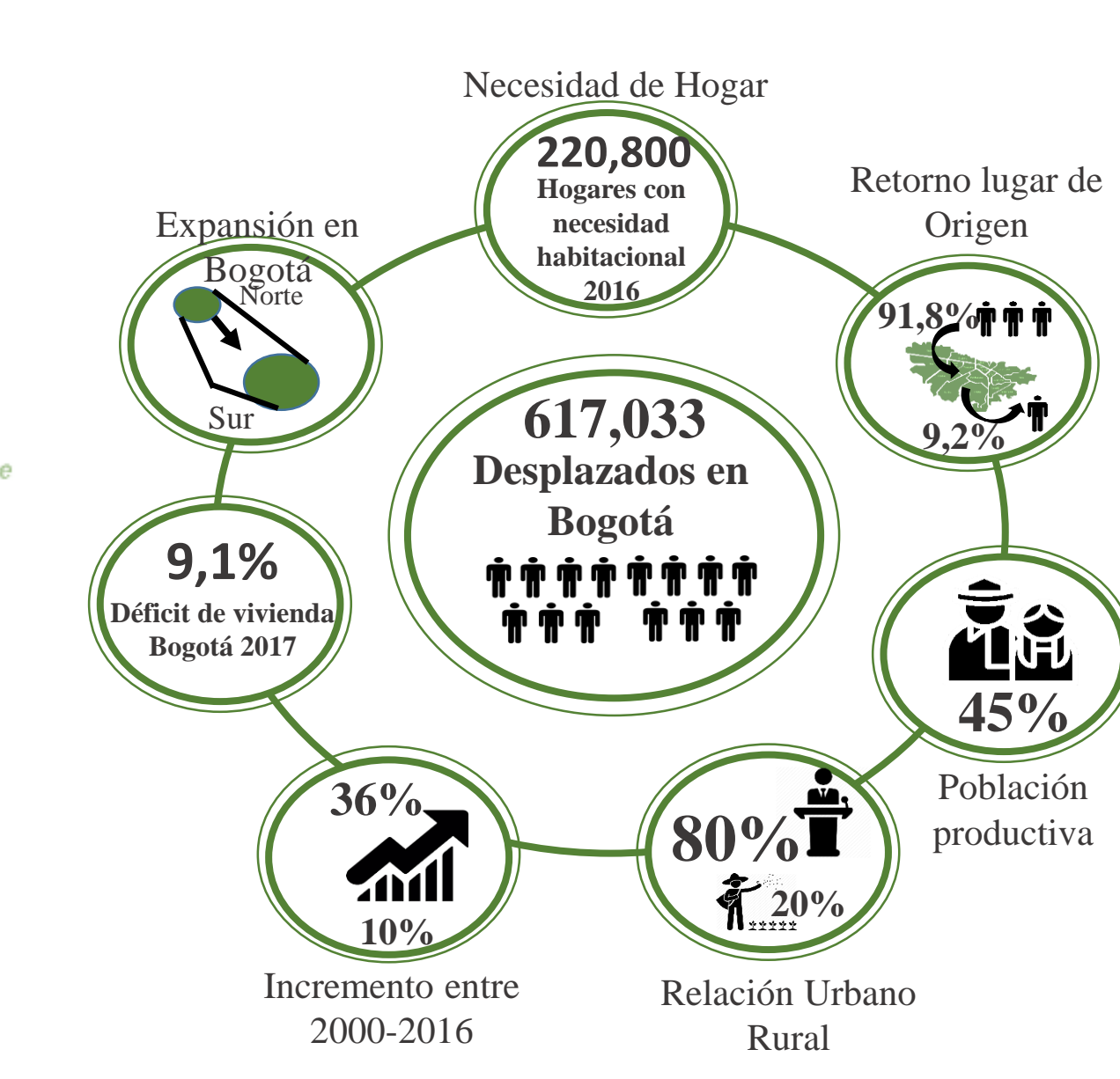
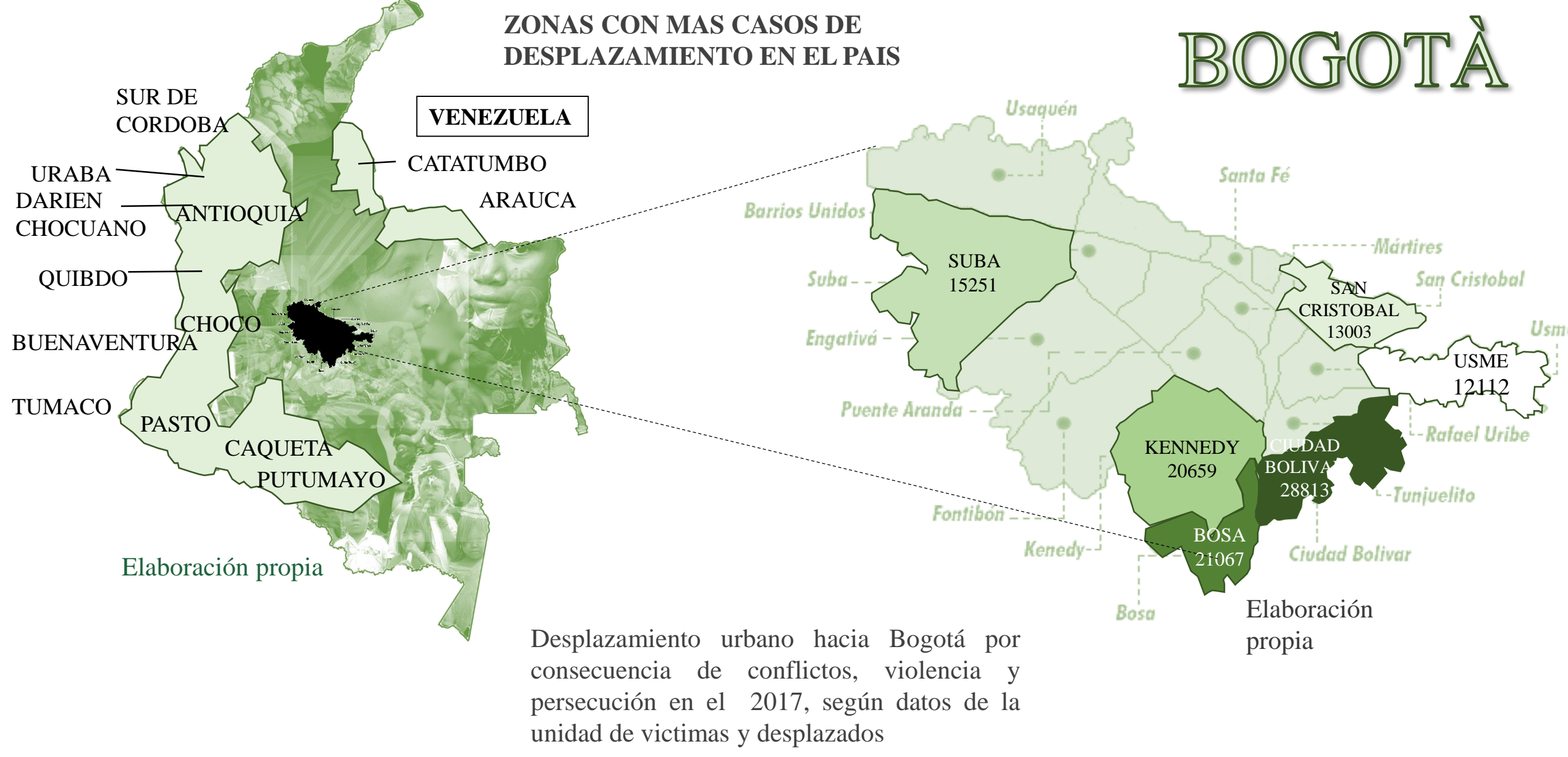
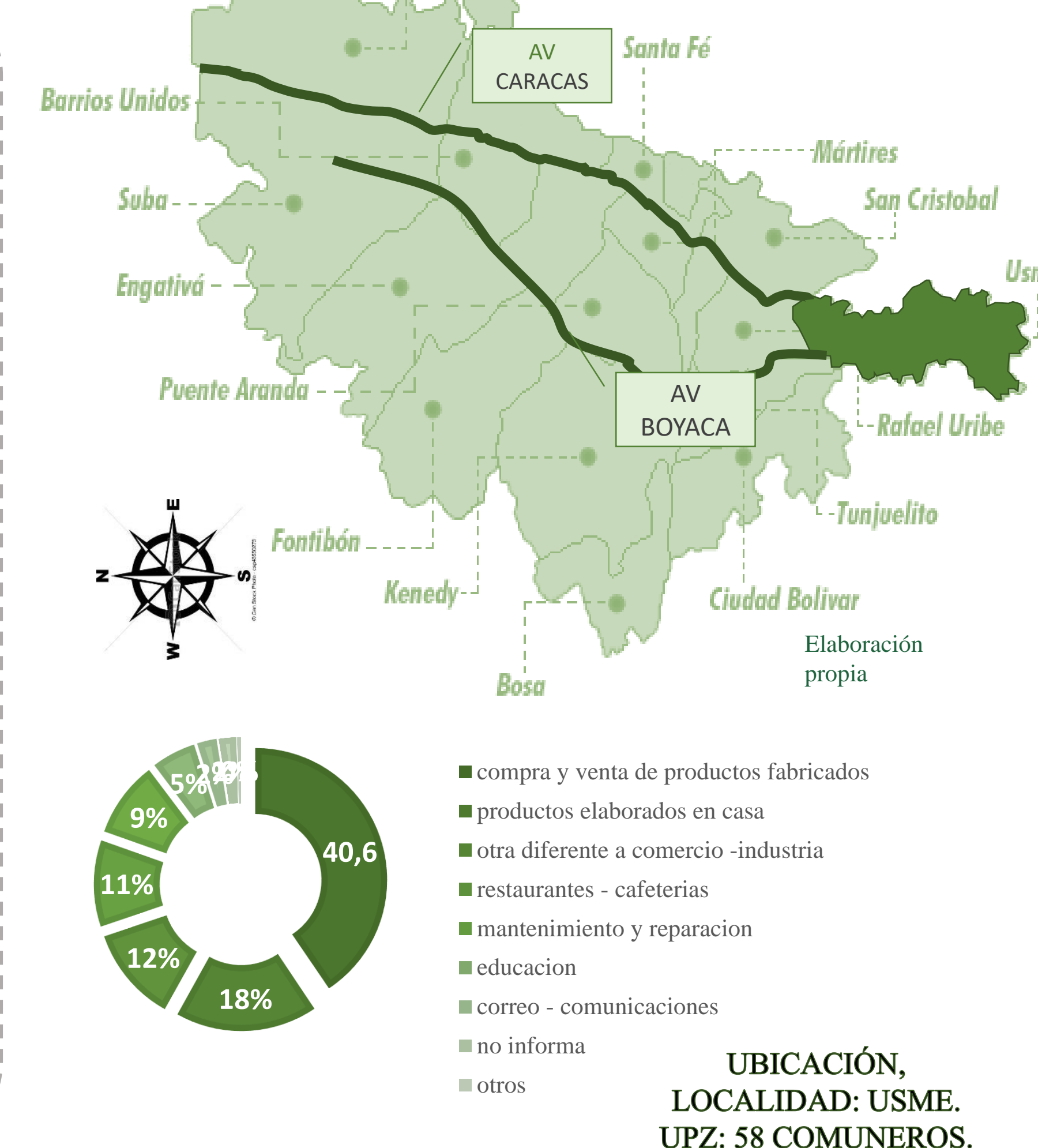
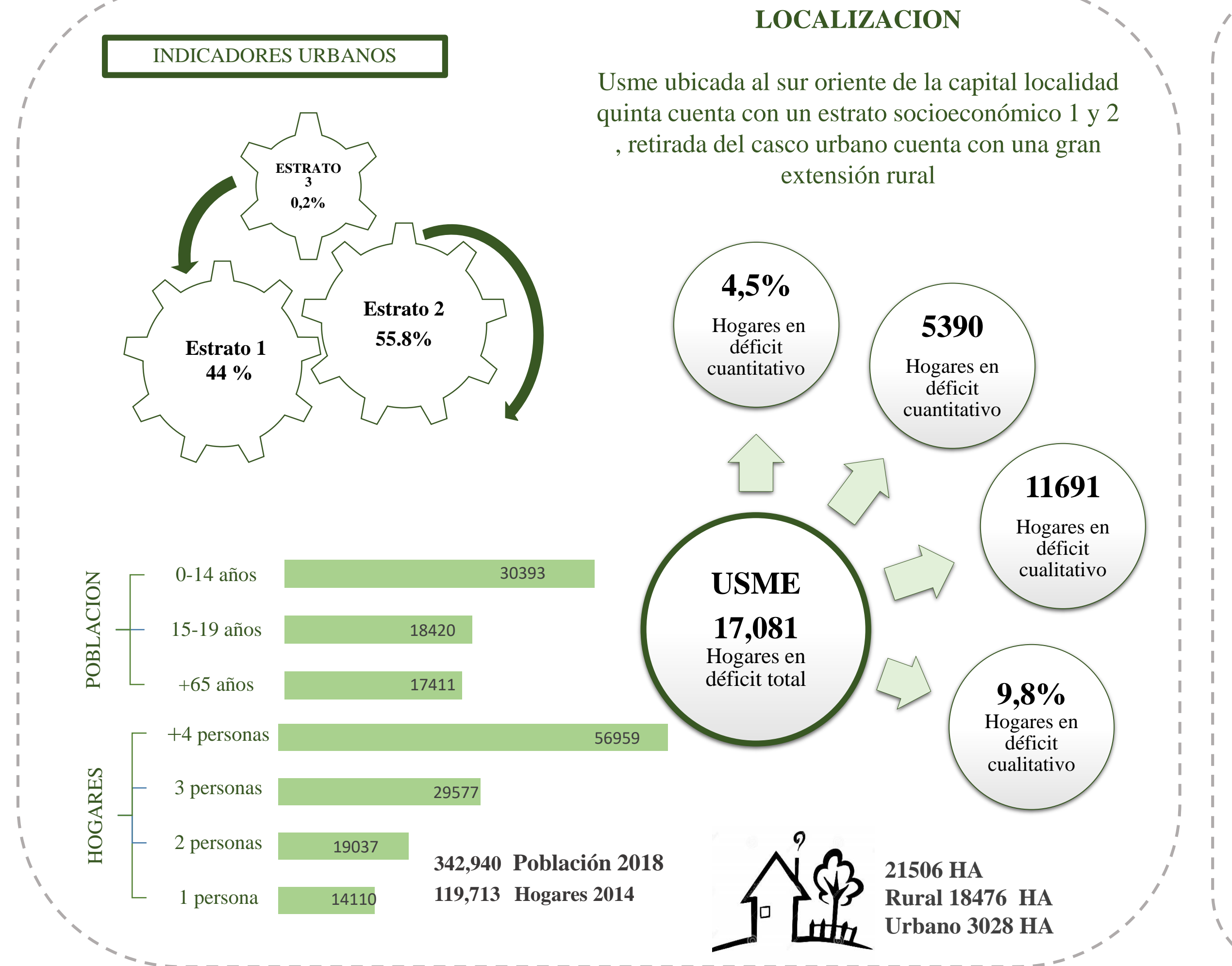


# TERRITORIO REVIVIFICADO

## VIVIENDA SOCIAL PARA VICTIMAS DEL DESPLAZAMIENTO FORZADO

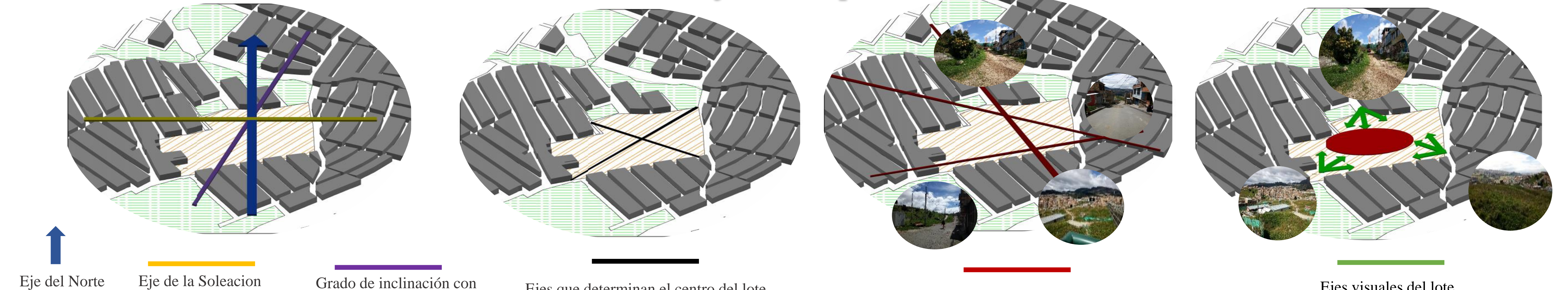


### ANALISIS LOCALIDAD USME

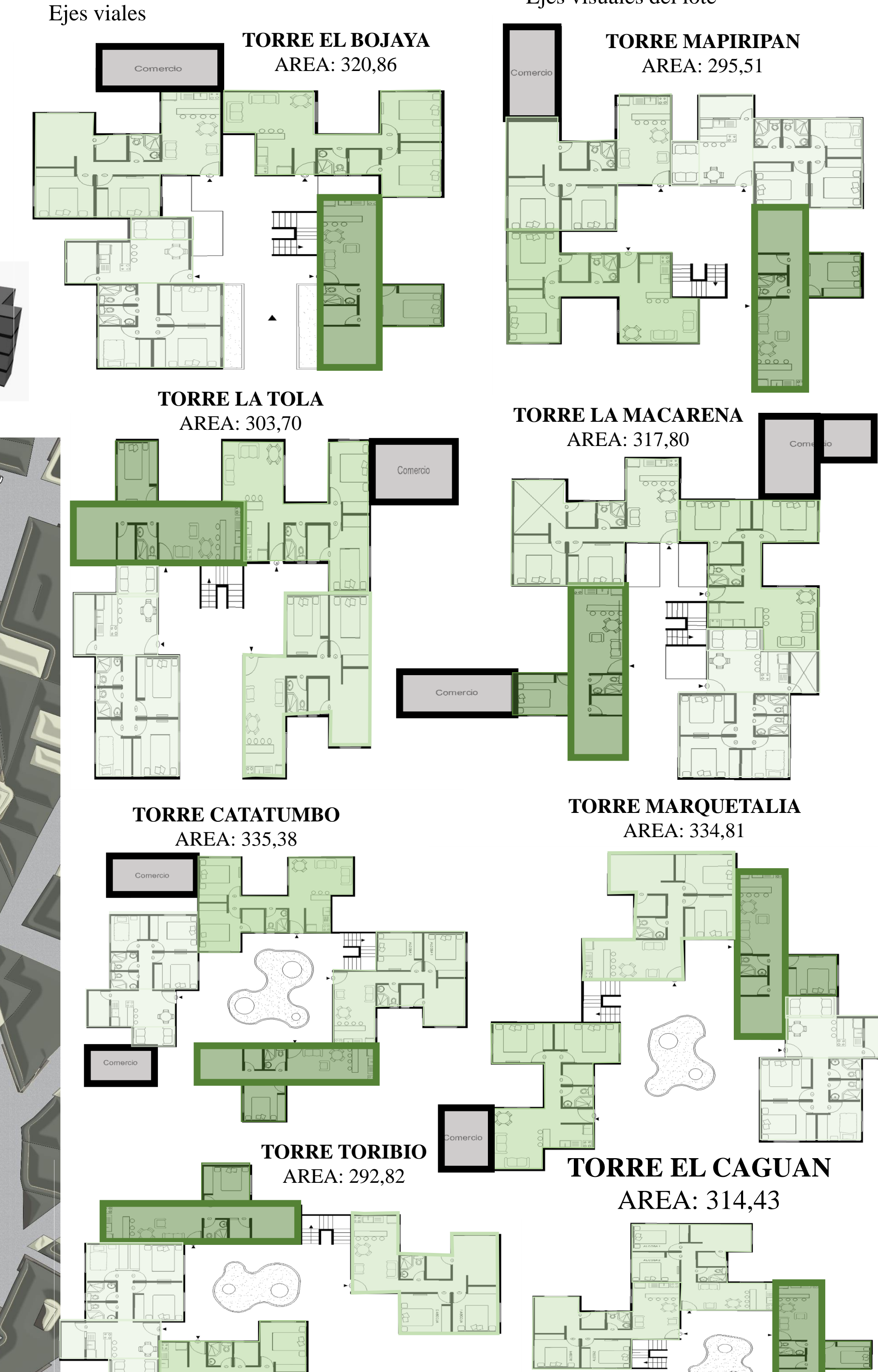
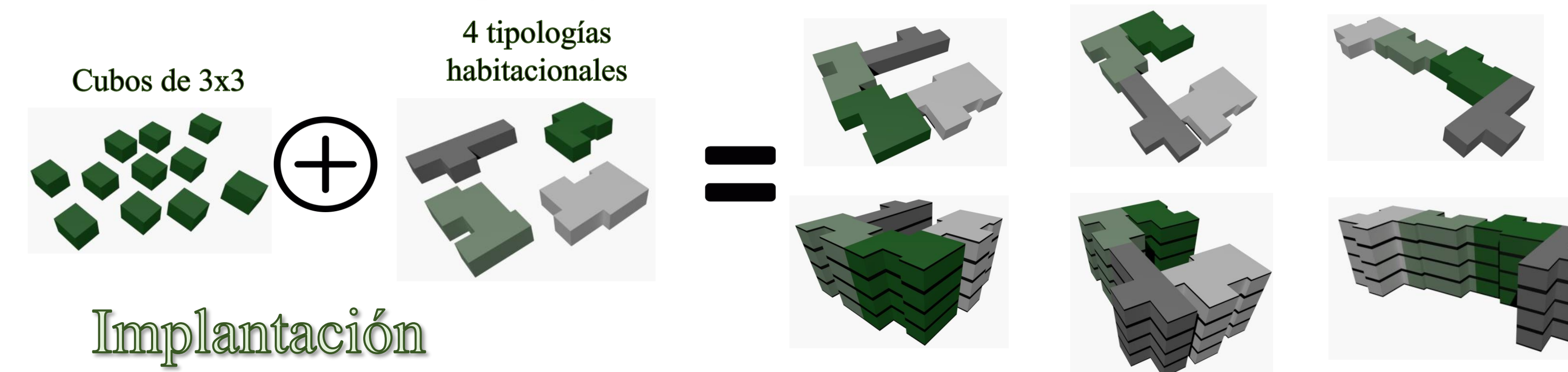


### LOCALIZACIÓN PROYECTO

### Ejes de composición



### Desarrollo de las tipologías de torres



### Usuario y tipo de vivienda progresiva

