

Fecha: (D.M.A) = 09-04-15

Interseccion = Calle 19 por Carrera 5

Hora de inicio = 9:15

Condicion climatica = Parcialmente nublado

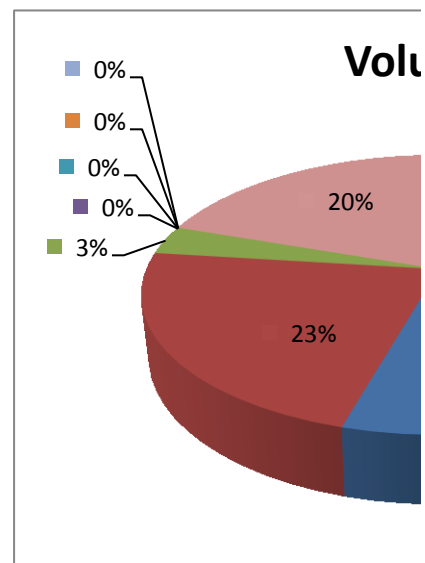
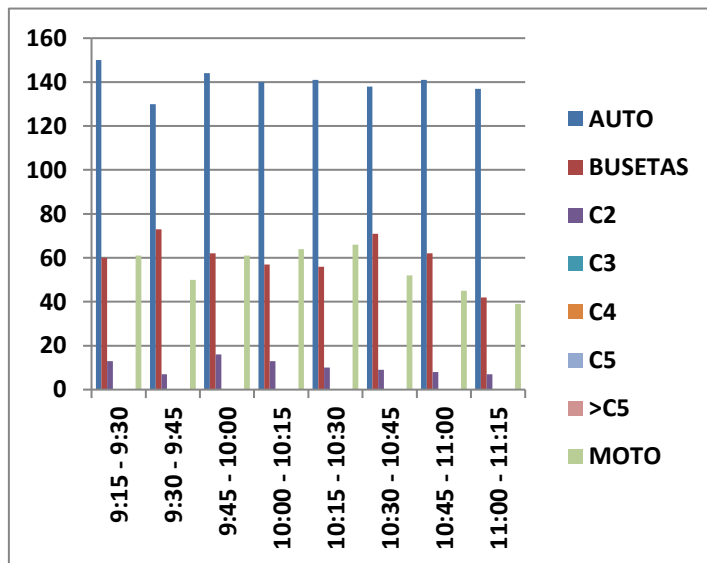
Aforador = Angela Gonzalez

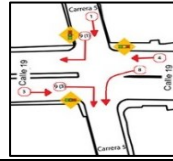
Movimientos aforados

Supervisor= Cynthia Vanessa Ramirez V.

3

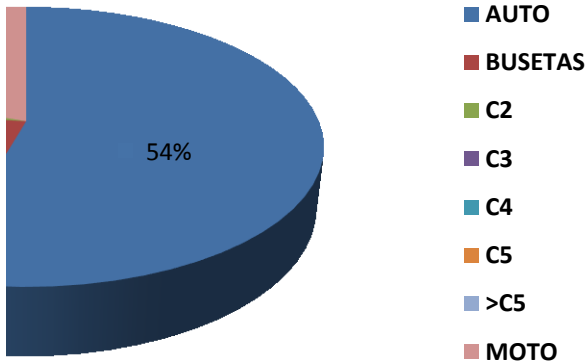
Hora de Inicio			CAMION			
	AUTO	BUSETAS	C2	C3	C4	C5
9:15 - 9:30	150	60	13	0	0	0
9:30 - 9:45	130	73	7	0	0	0
9:45 - 10:00	144	62	16	0	0	0
10:00 - 10:15	140	57	13	0	0	0
10:15 - 10:30	141	56	10	0	0	0
10:30 - 10:45	138	71	9	0	0	0
10:45 - 11:00	141	62	8	0	0	0
11:00 - 11:15	137	42	7	0	0	0
Volumen 2h	1121	483	83	0	0	0
Composición	53%	23%	4%	0%	0%	0%
10:15 - 11:15	557	231	34	0	0	0
Composición	54%	23%	3%	0%	0%	0%
9:15 - 10:15	564	252	49	0	0	0
Composición	51%	23%	4%	0%	0%	0%



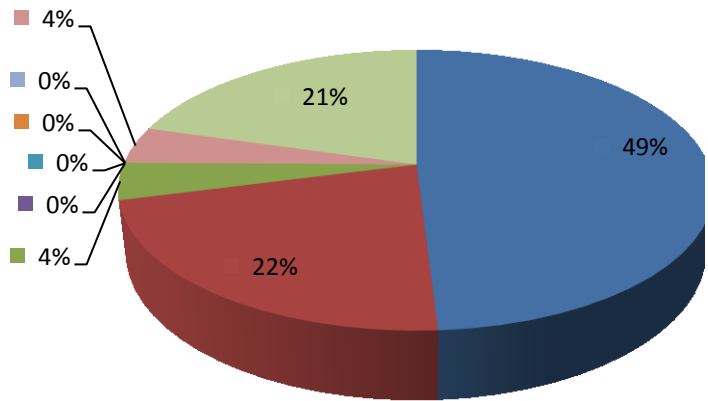


>C5	Total	MOTO	TOTAL	HORA	HORARIA
0	13	61	284		
0	7	50	260		
0	16	61	283		
0	13	64	274	1101	51,8%
0	10	66	273	1090	
0	9	52	270	1100	
0	8	45	256	1073	
0	7	39	225	1024	48,2%
0	83	438	2125	2125	100,0%
0%	4%	21%	100%		
0	34	202	1024	FHP:	Vol.max.
0%	3%	20%	100%	0,97	1101
0	49	236	1101	FHM:	Vol.min.
0%	4%	21%	100%	0,94	1073

Volumen maximo



Volumen minimo



- 
- AUTO
 - BUSETAS
 - C2
 - C3
 - C4
 - C5
 - >C5
 - Total
 - MOTO